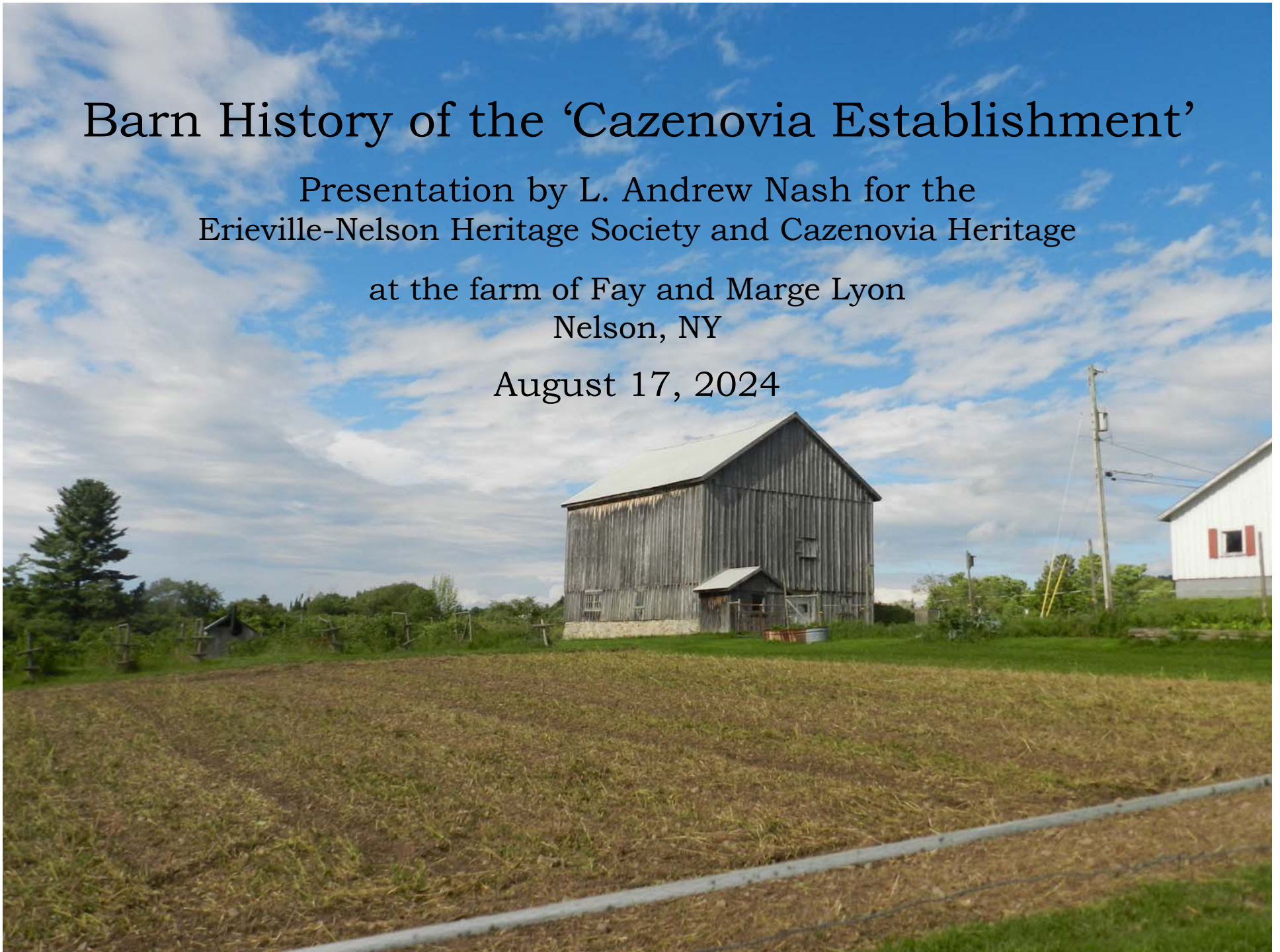


Barn History of the 'Cazenovia Establishment'



Presentation by L. Andrew Nash for the
Erieville-Nelson Heritage Society and Cazenovia Heritage

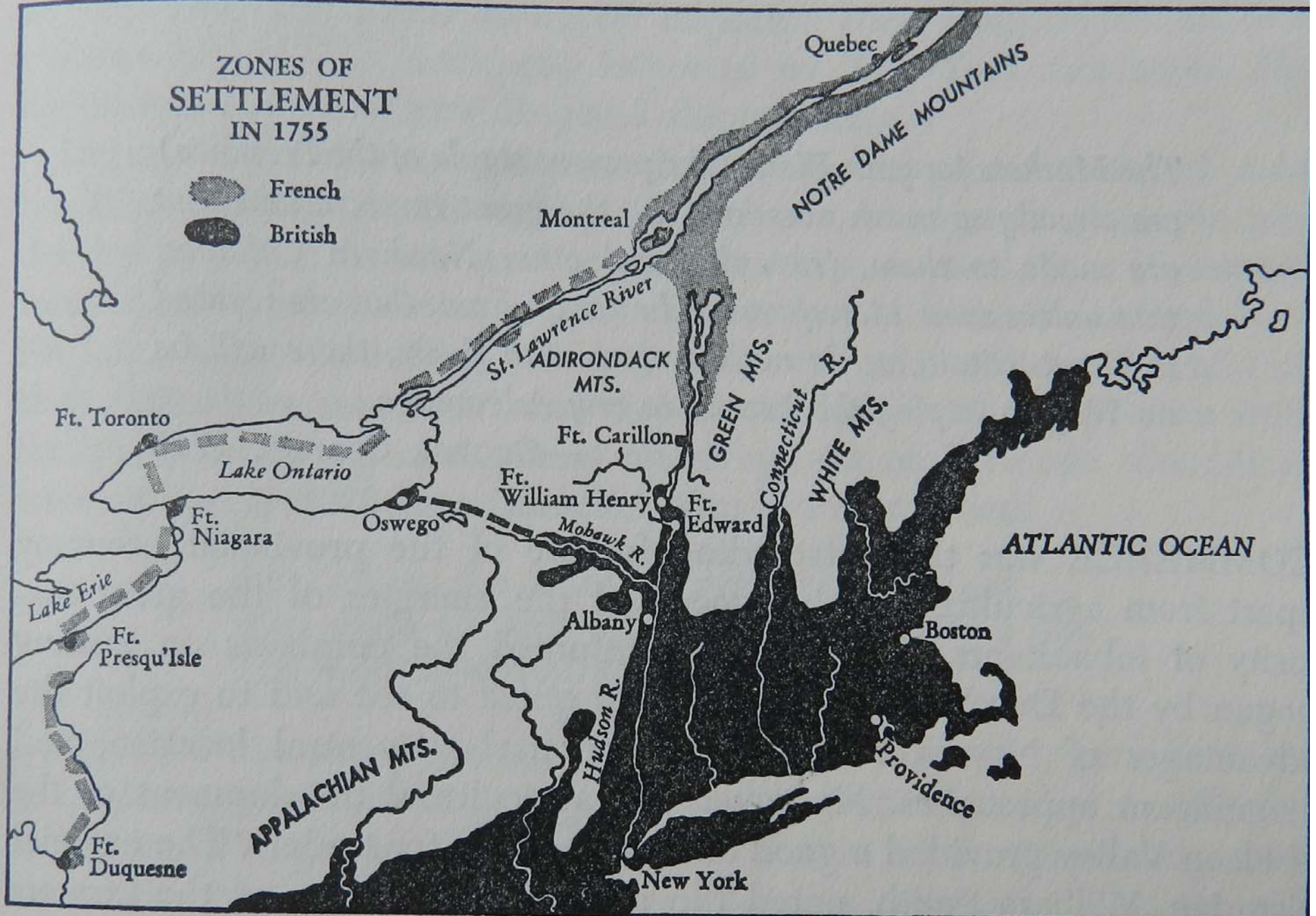
at the farm of Fay and Marge Lyon
Nelson, NY

August 17, 2024



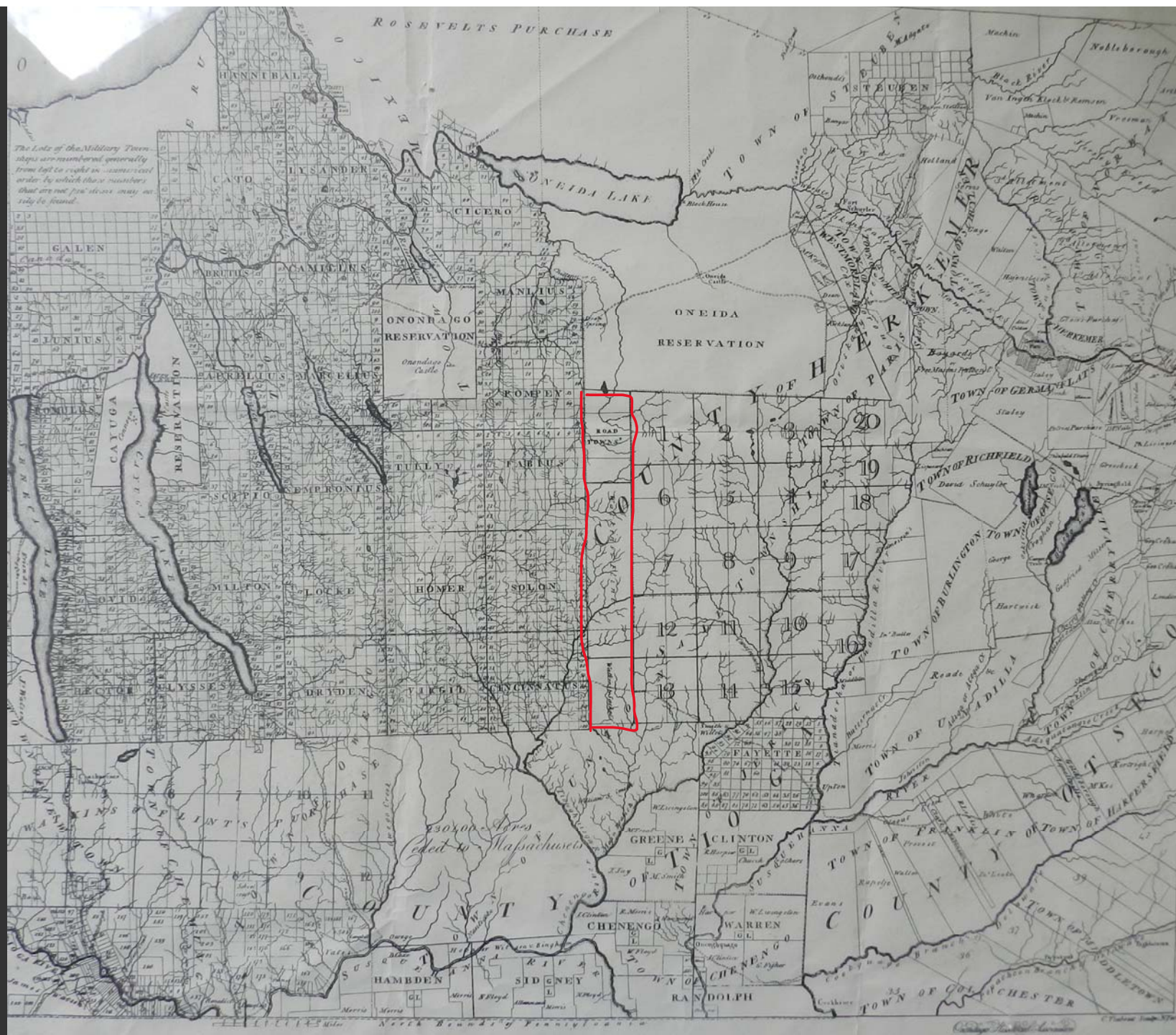
ZONES OF
SETTLEMENT
IN 1755

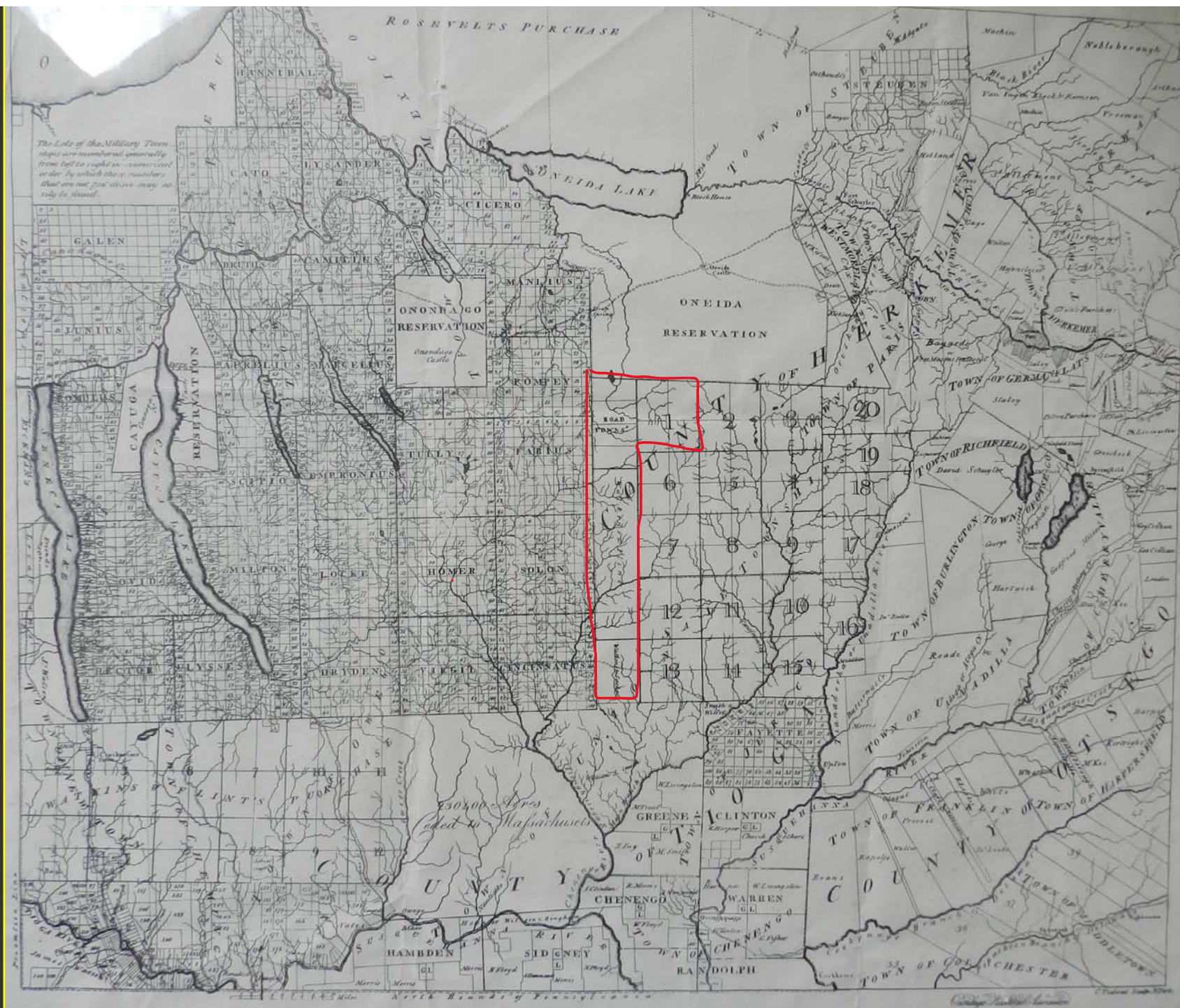
-  French
 British

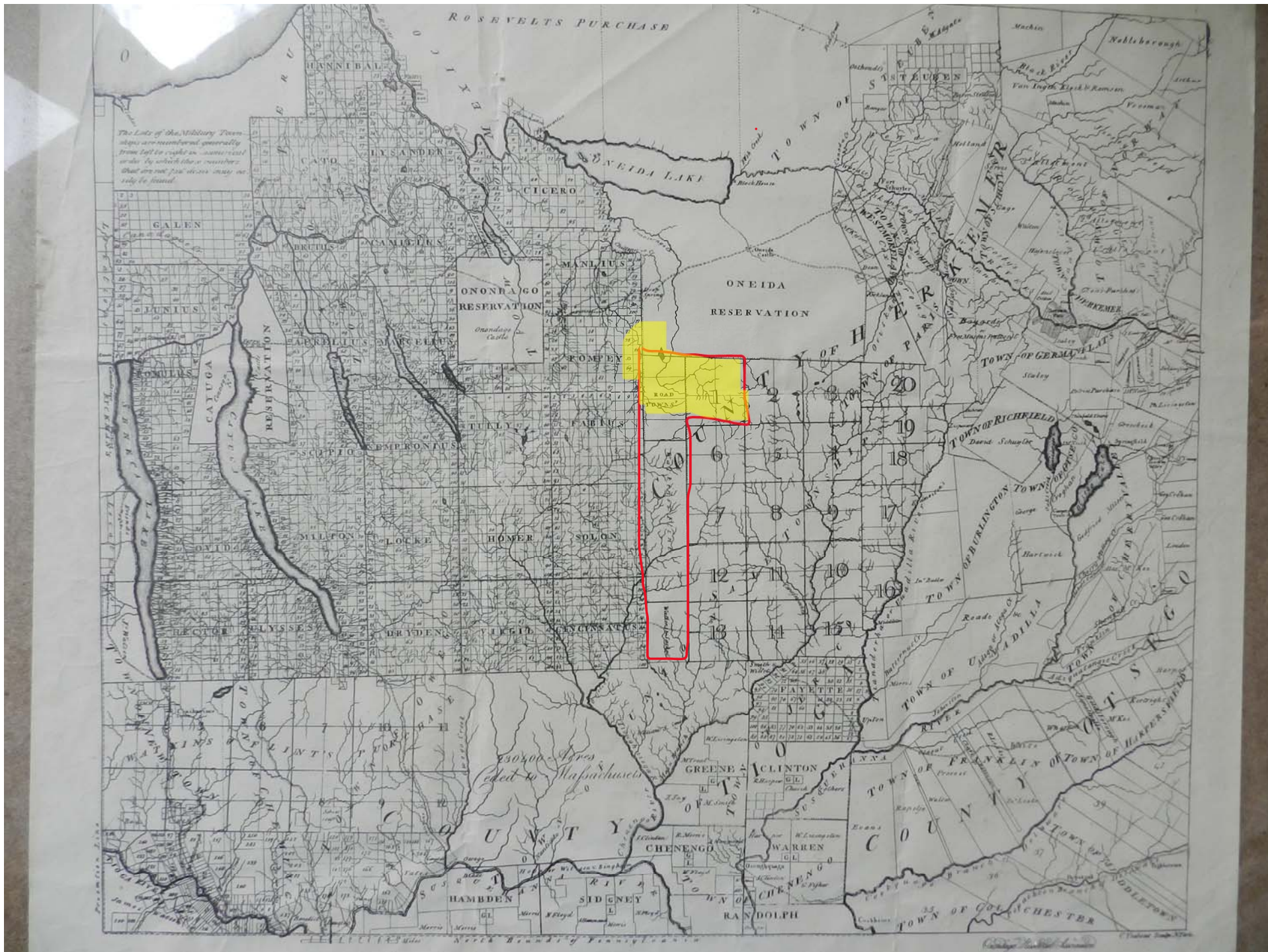


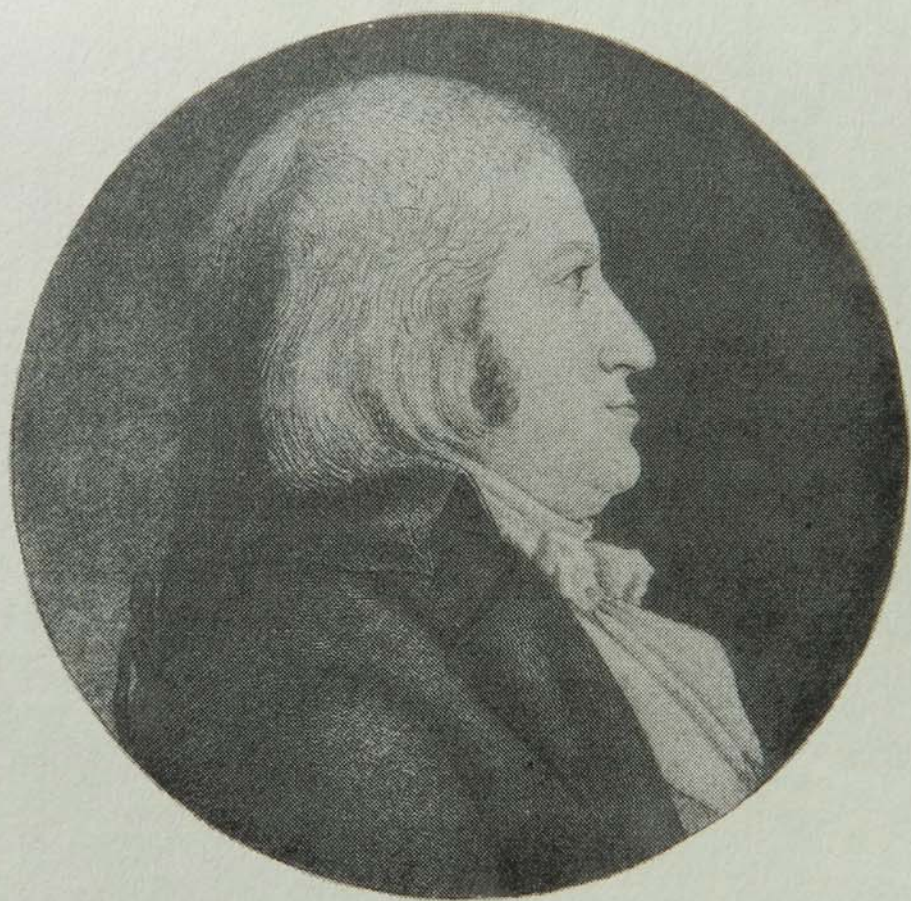


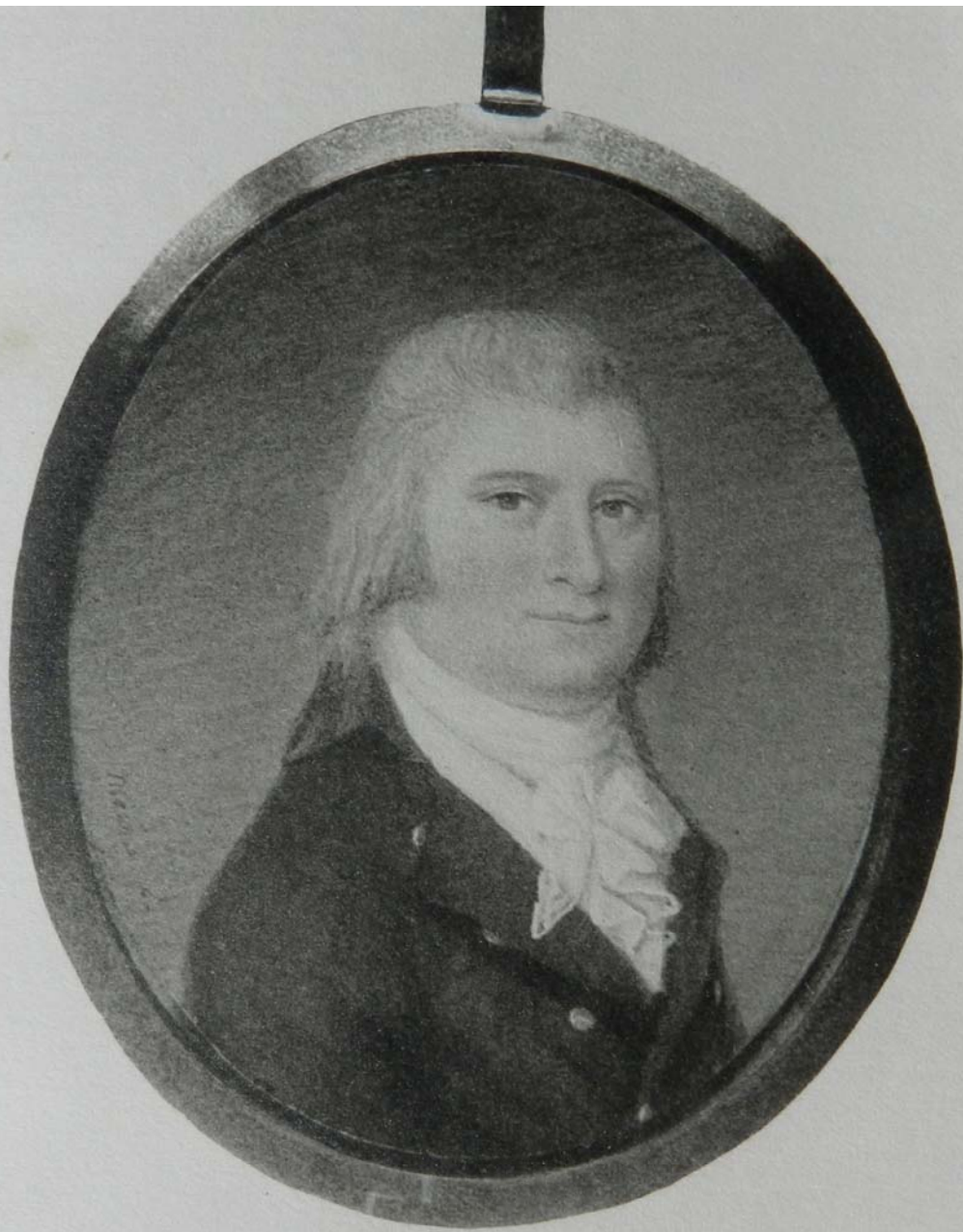


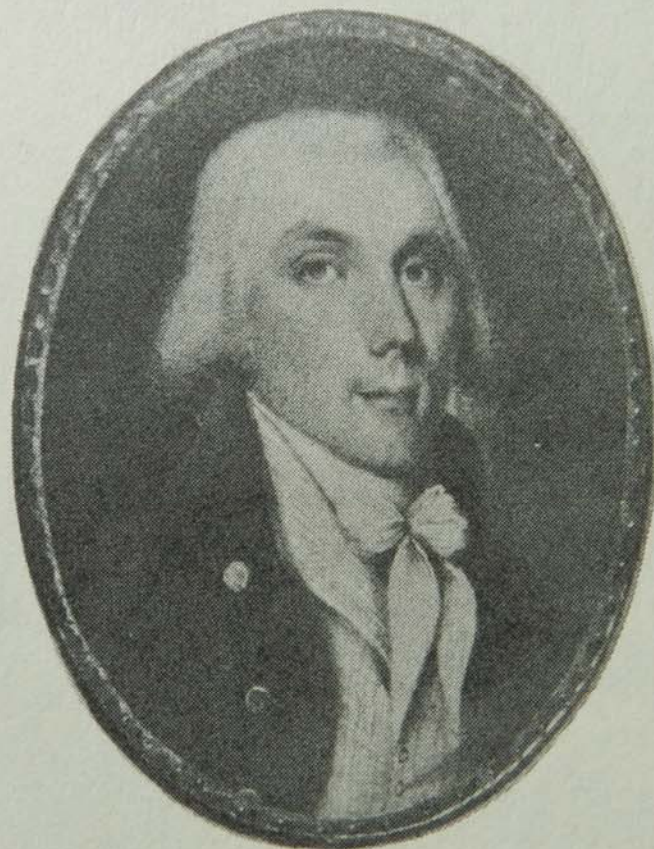












Miniature portrait of Samuel S. Forman, Ca. 1790. Artist unknown.

MAP
OF THE
(COUNTY)
(OF)
MADISON

By David H. Burr

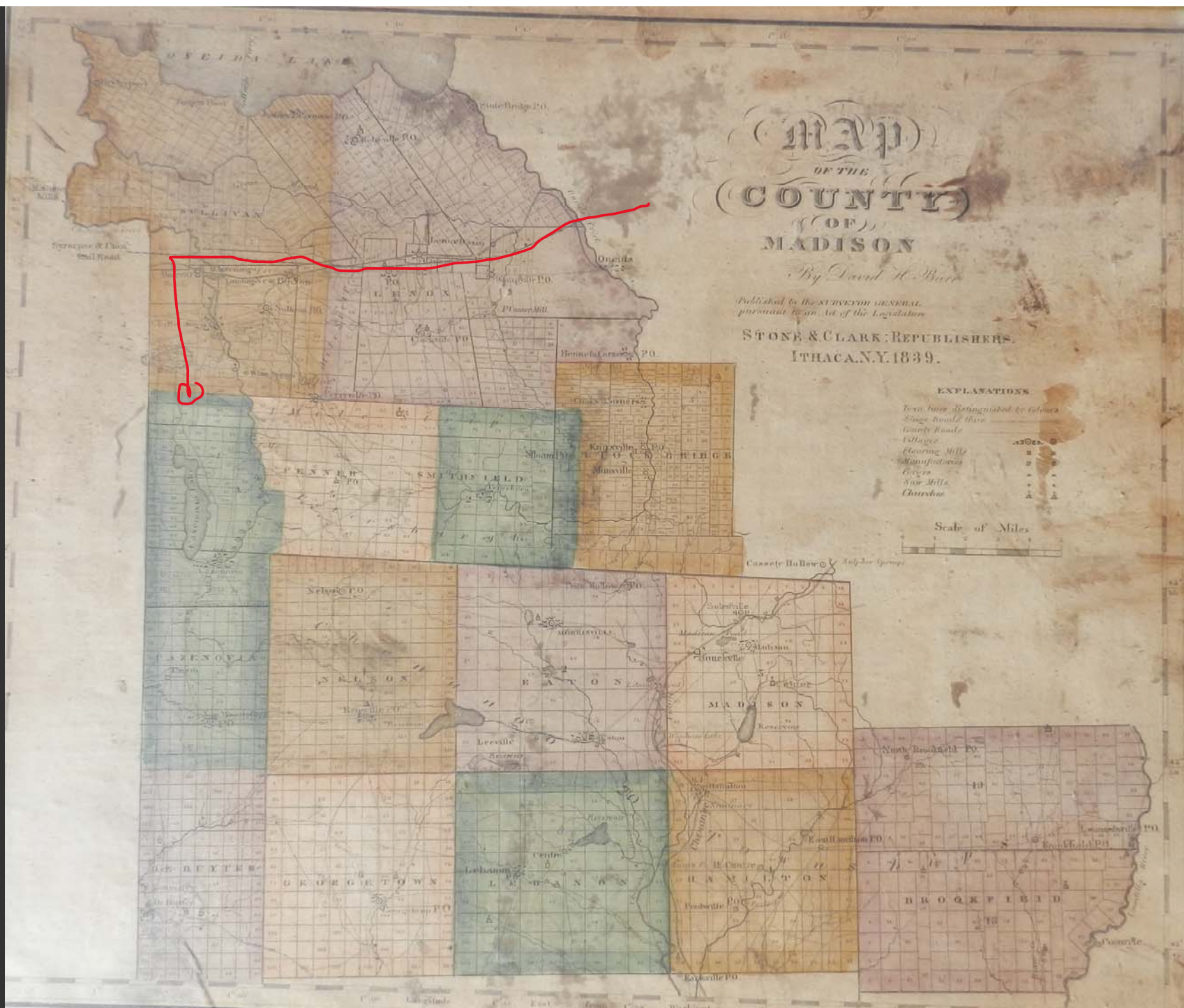
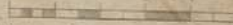
Published by the SURVEYOR GENERAL
pursuant to an Act of the Legislature

STONE & CLARK, RE-PUBLISHERS.
ITHACA, N.Y. 1839.

EXPLANATIONS

Town lines distinguished by colours
Stage Roads thin
County Roads thick
Villages
Clearing Mills
Manufactories
Covers
Saw Mills
Churches

Scale of Miles



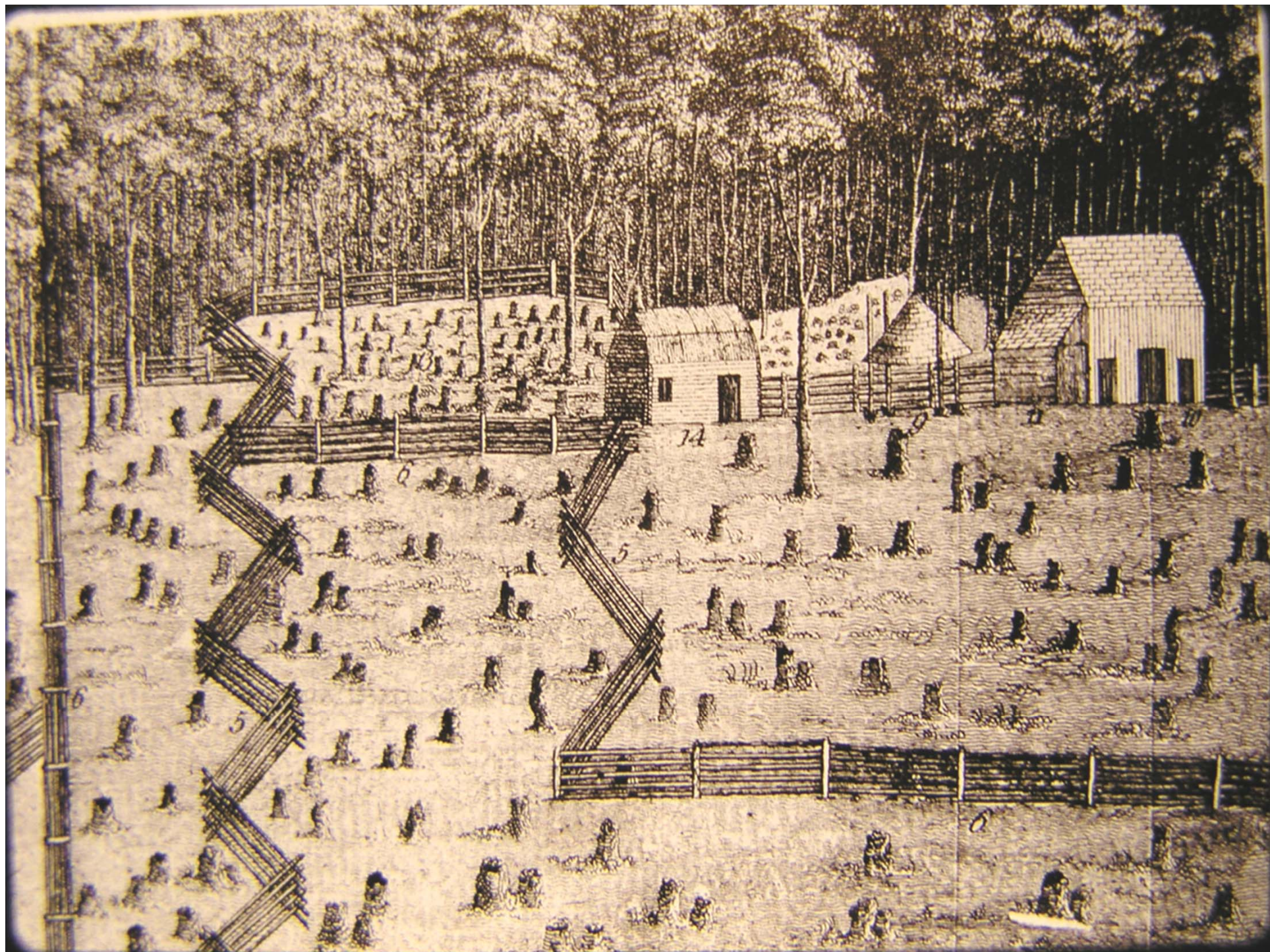


the latter in
Company

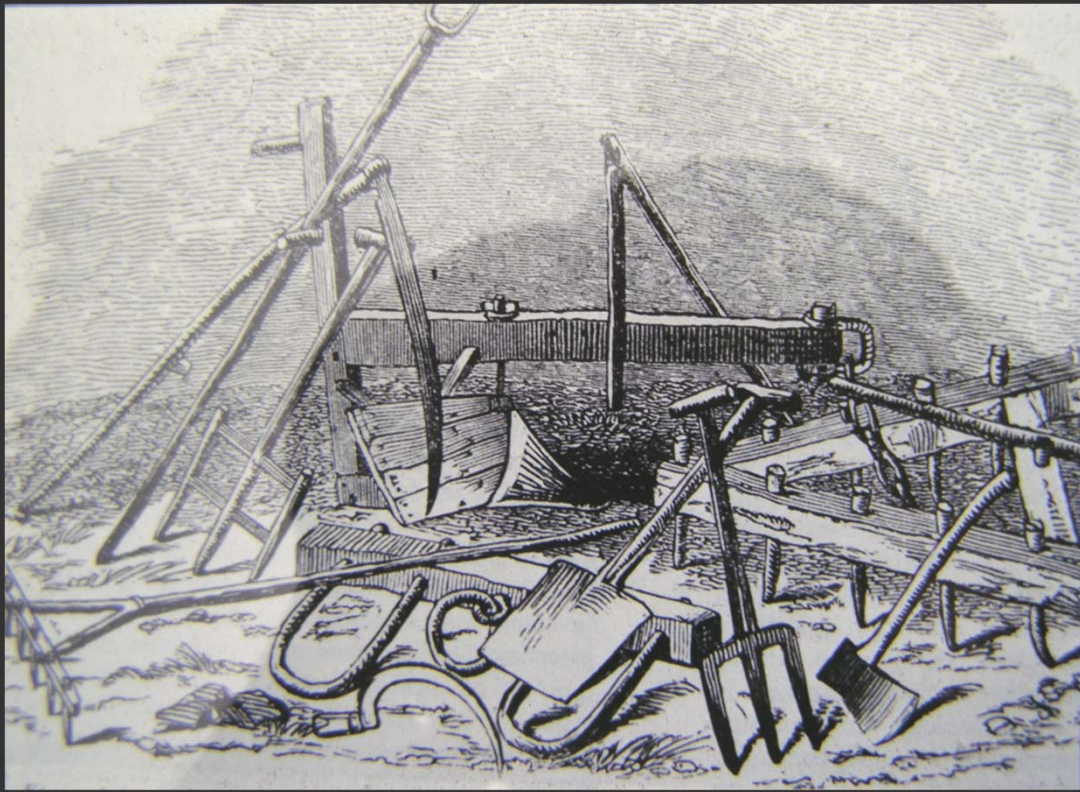
Statement of the whole of the Holland Land Company
in the present counties of Madison and Chenango, September 1863.

Townships	Men.	Women	South from 1848.	Children under 18.	Free Houses.	Free Barns.	Horses.	Open Cows.	Sheep.	Young Cattle.	Age Horses.	Corn.	Wheat.	Barley Oats.	Indian Corn.	Timothy.	Hay.	Other Grain.	Total Value.
Road Township (proper).	205	188	81	372	22	38	156	150	326	1035	316	574	507	320	166	878	785	385	3.615
Road Township Reservation.	48	48	22	82	11	14	20	46	76	234	64	165	94	74	26	178	221	267	1.025
Ten Acre Lots.	4	4	8	9	2	4	7	5	54	2	44	44	5	2	39	44	44	44	157
Village of Cazenovia.	28	24	13	33	16	10	30	4	20	29	4								
Amount of Road Township.	285	264	119	496	51	66	221	200	427	1332	386	760	601	399	194	1095	1050	668	4.797
1 st One Township.	248	221	138	502	18	32	176	189	391	1572	447	818	685	384	135	1147	834	496	4.499
Two Township.	77	62	15	127	3	8	38	60	100	247	125	163	133	100	74	254	164	145	1.033
De Ruyter Township.	50	53	29	84	6	13	42	54	81	276	139	123	134	62	57	150	82	145	753
Bracket Township.	14	12	18	27	2	2	11	12	19	45	32	12	23	5	39	20	12	47	158
Total.	674	612	319	1226	80	121	488	575	1018	3432	1129	1896	1586	950	501	2666	2142	1501	11.243
Population of 1802.	599	529	257	1064	68	101	400	457	821	2178		1917	1202	525	353	2180	1385	1648	9.218
Increase during the year.	75	83	62	162	12	20	88	58	197	1254			384	425	148	486	759		2025
Decrease during the year.											21					54		147	
Total Number of souls in 1803 - 2,831, in 1863 - 2464 - Increase during the year 352,																			

2,831

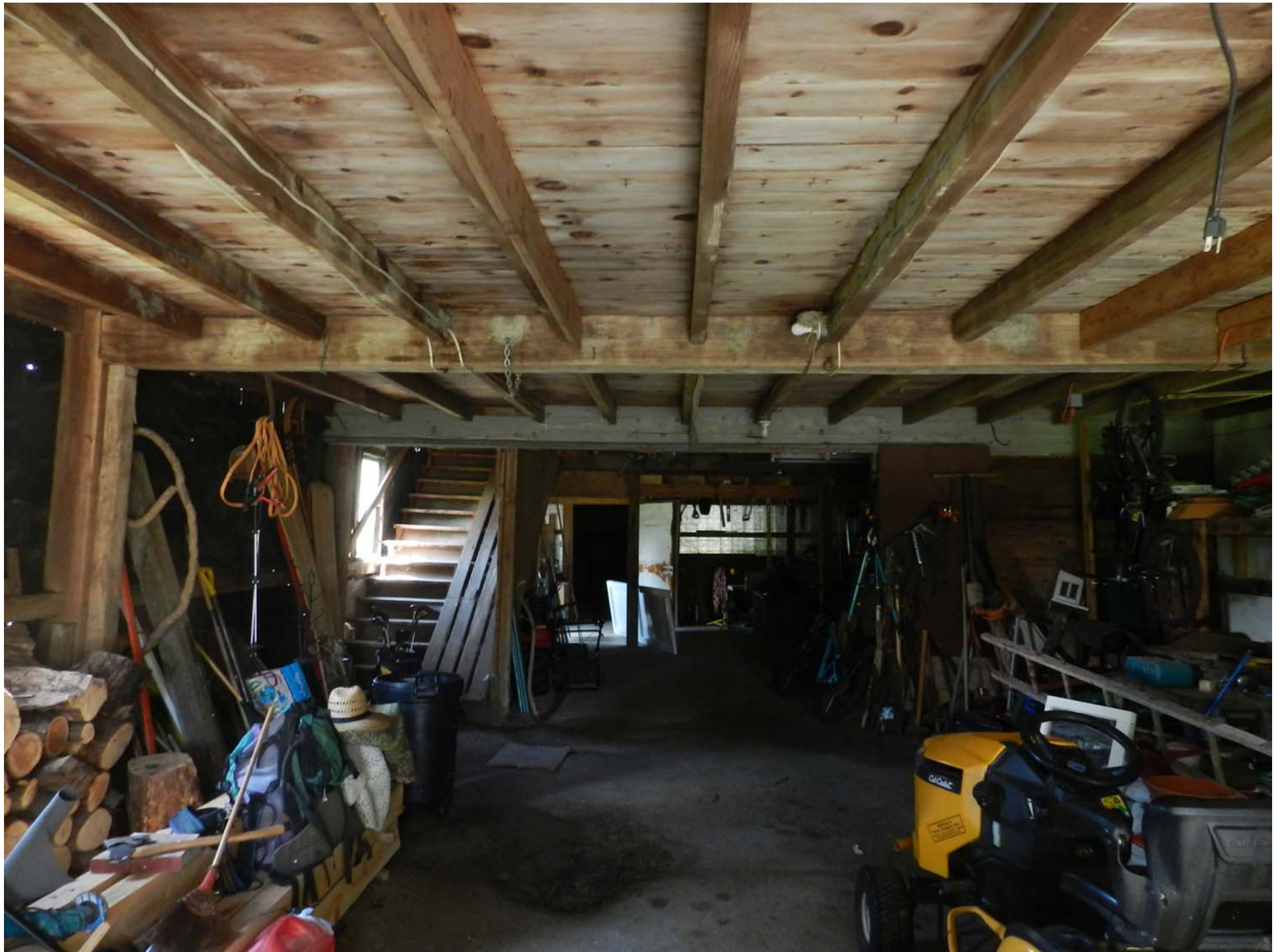


























Carriage Barn Books

Prices

All Adult books are £2 unless noted otherwise

£1 Paperbacks

Children's and YA Books

£1 for Softcover and Board Books

£2 Hardcovers

ANIMALS

SCIENCE

ANTHROPOLOGY ARCHAEOLOGY
ECOLOGY EARTH SCIENCE
FIELD GUIDES GEOLOGY
NATURE SKYWATCHING
SPACE WEATHER

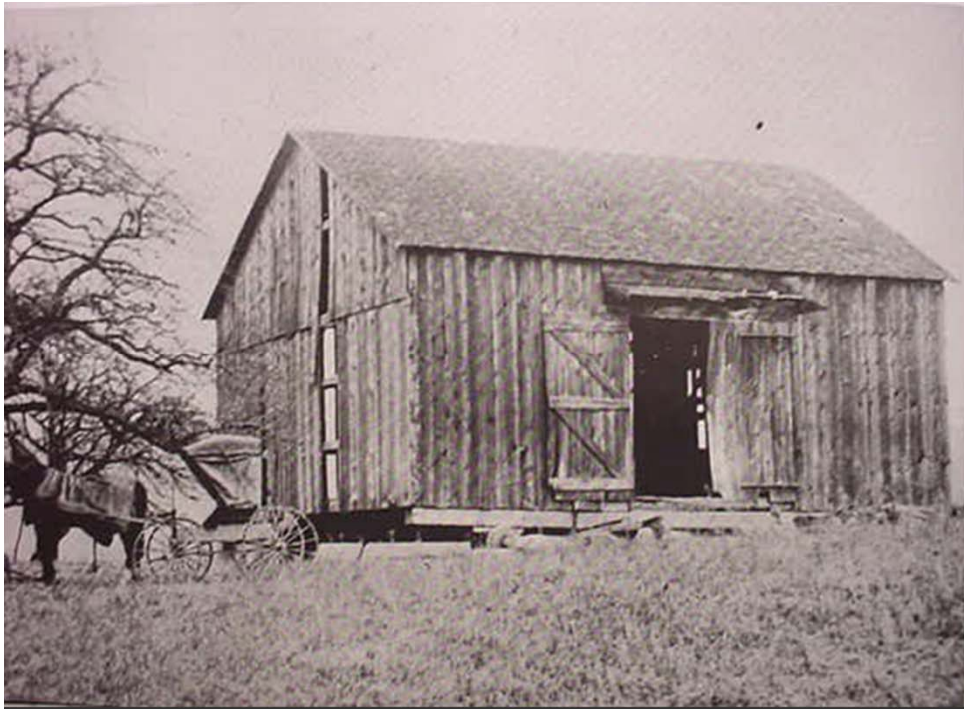
RELIGION











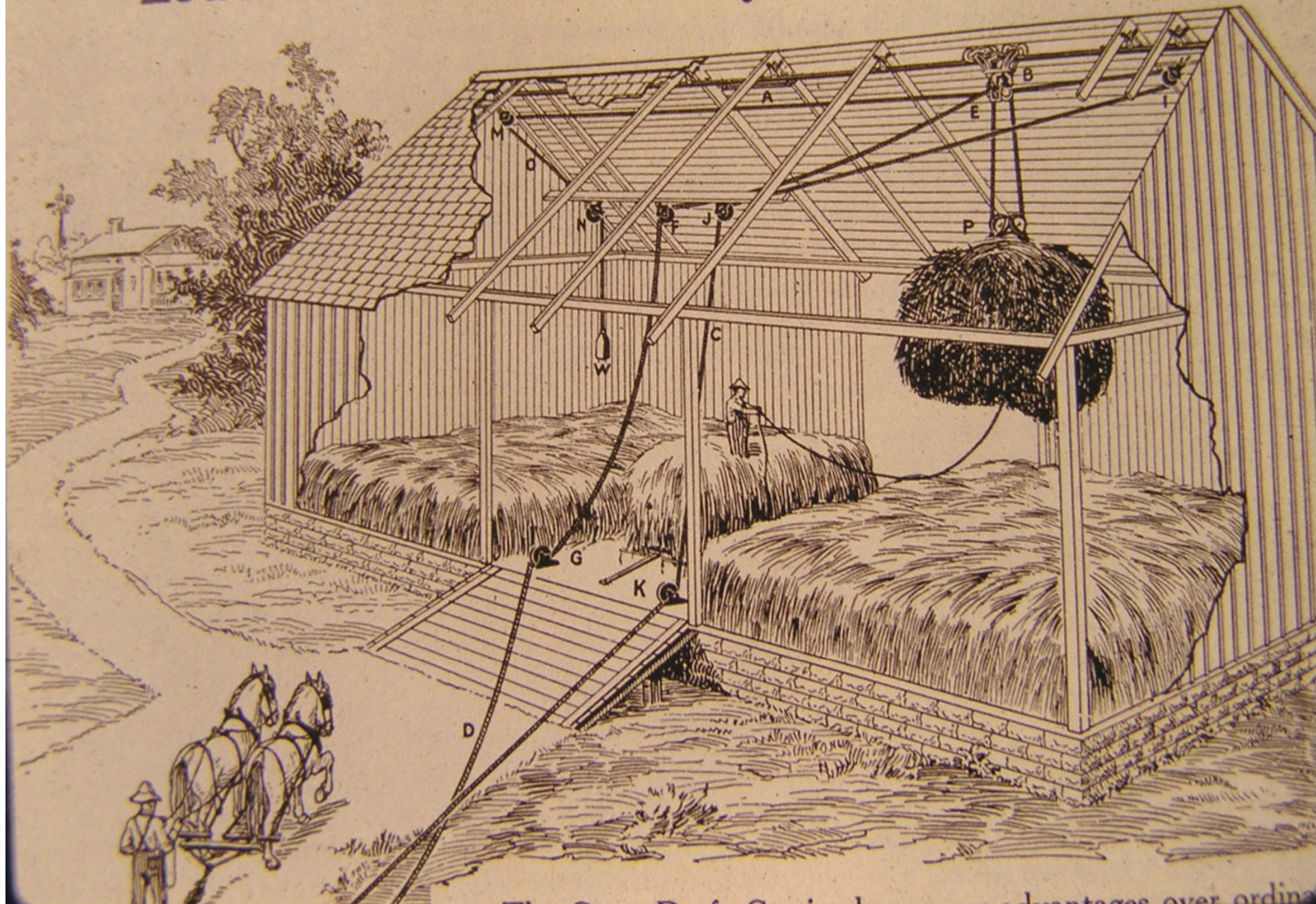








Louden Cross Draft Hay Carrier — Continued























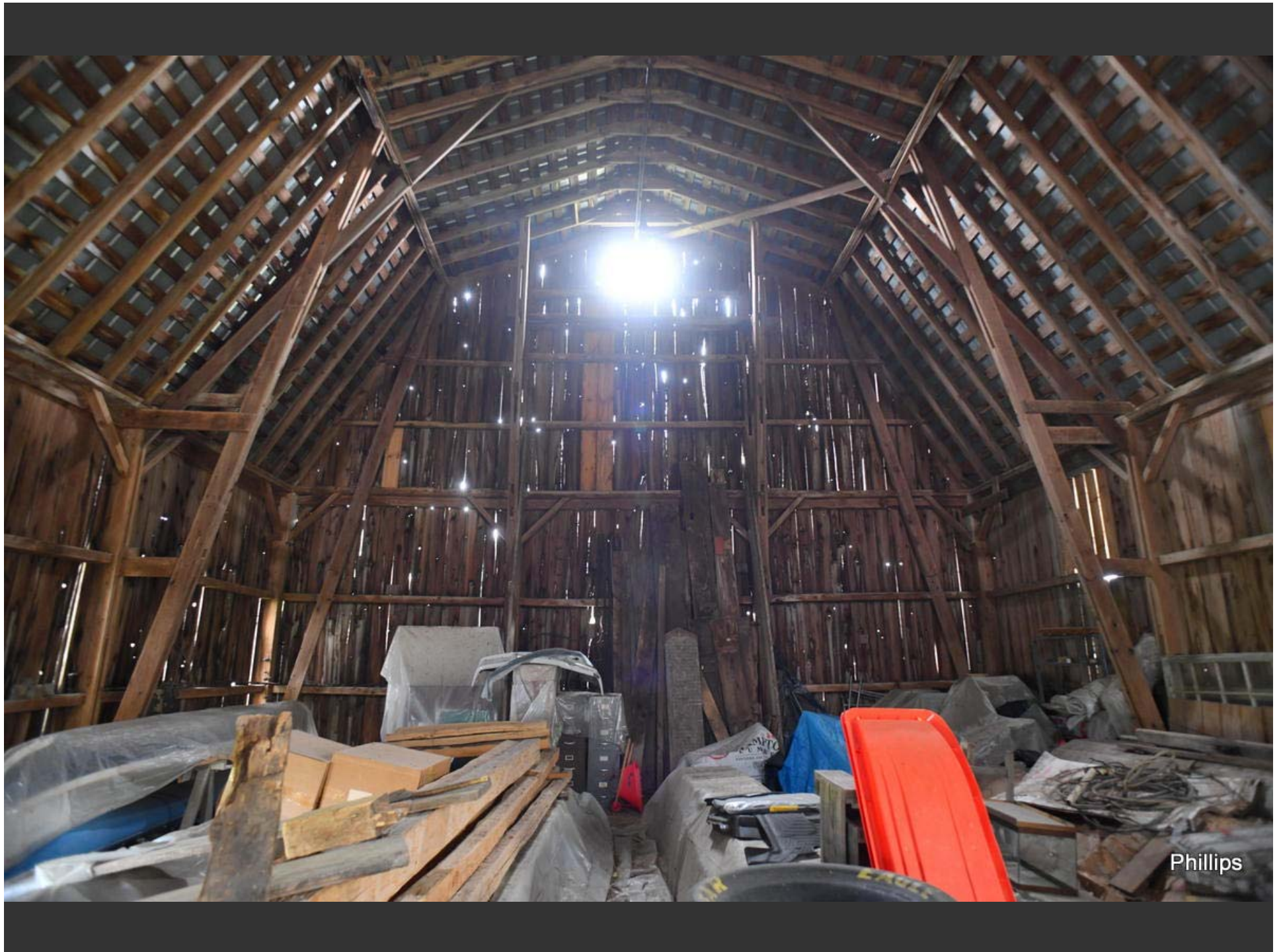




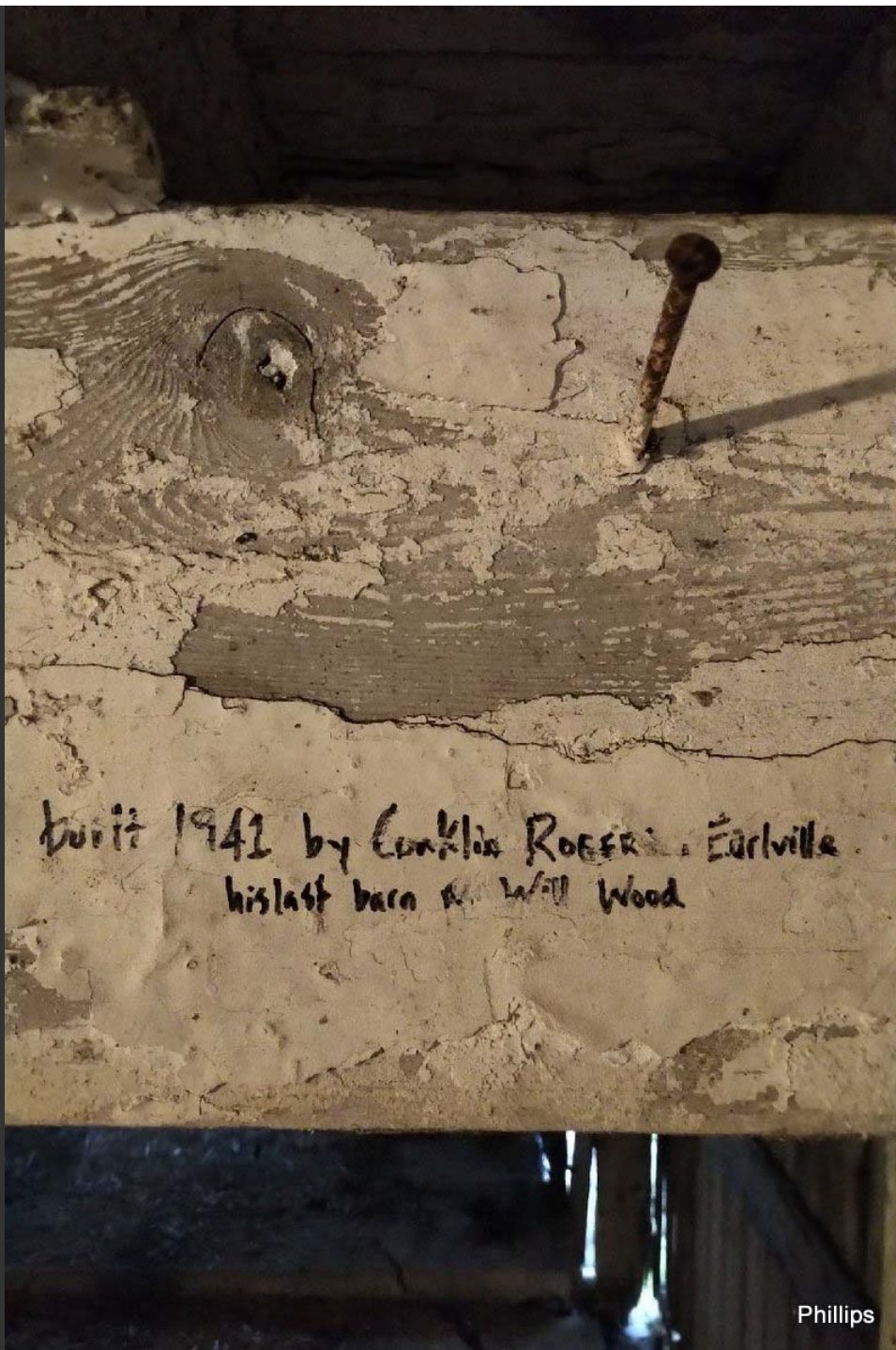
Phillips

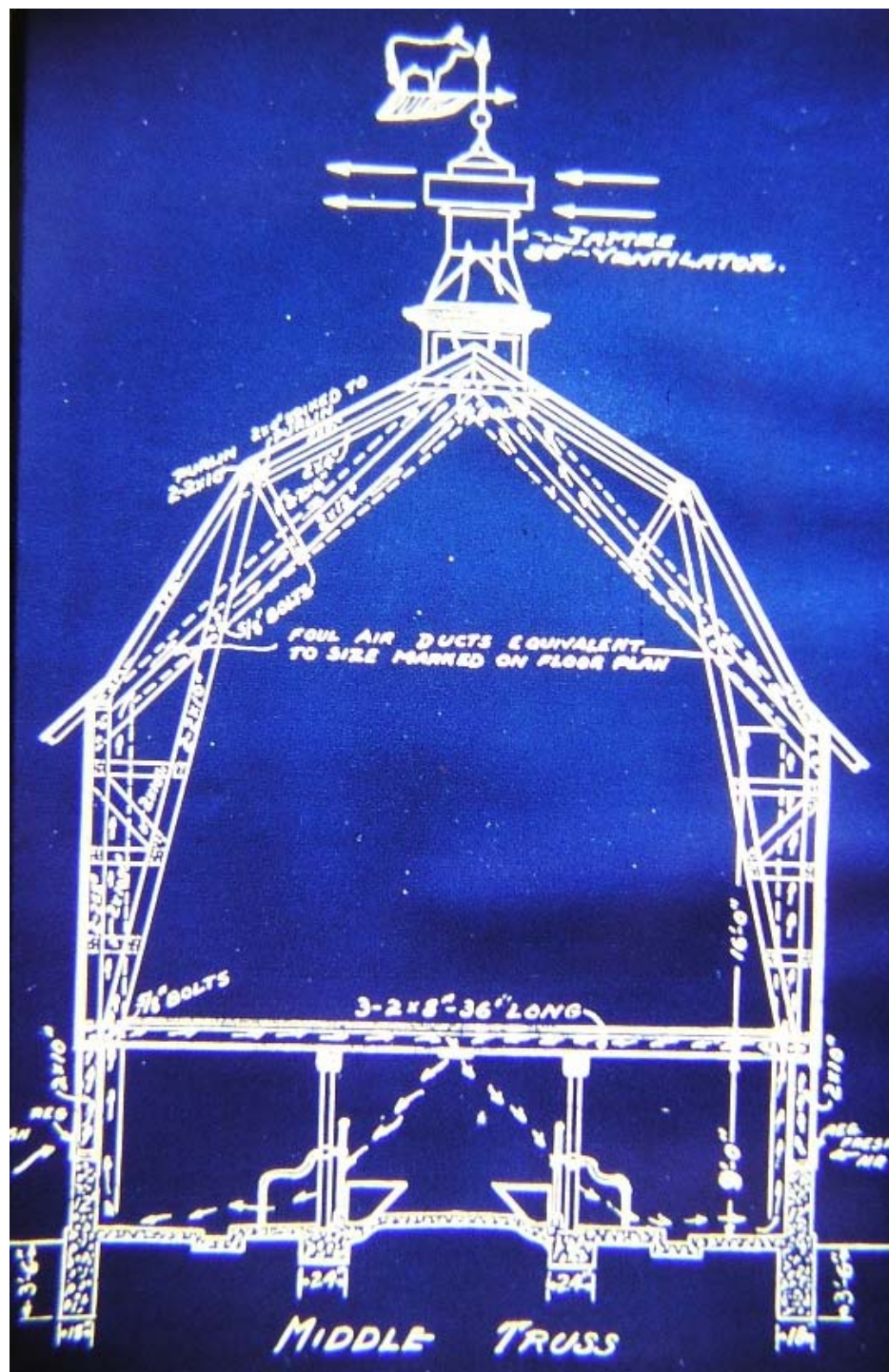


Phillips



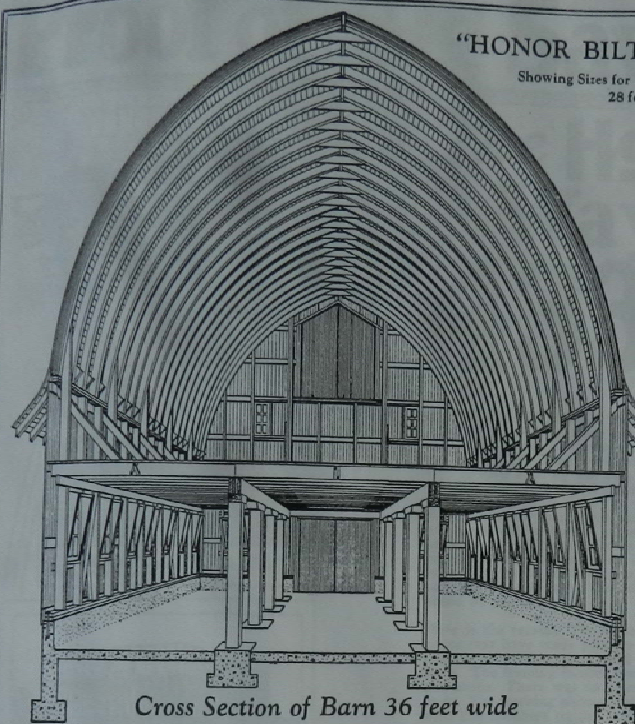
Phillips











Cross Section of Barn 36 feet wide

Gothic Roof Barn

All Framing Lumber
Already Cut and Fitted

In recent years there has been a tendency towards a better, more permanent and a more economical construction of the American farm barn. The problem has been to secure increased loft capacity, without the use of cumbersome and costly timbers, and to provide a mow with an open center permitting the operation of a modern hay carrier from one end of the loft to the other. In the heavy hewed timber framed barns that were popular a decade or two ago, not only did the cross beams and supporting timbers interfere with carriers, but much valuable space was lost on account of such timbers making parts of the mow entirely inaccessible.

The insistent demands for a barn that would fill the purposes for which it is to be used and that also would provide for the proper housing of the crops and animals, so that these could be taken care of with a minimum amount of labor, led to the development of the plank frame types of construction—the Braced Rafter Barn and the Trussed Roof Barn already described. While these two types meet every practical requirement, are economical in the use of material and easy to erect, authorities responsible for their development still realized that something was lacking—that something was beauty.

Barns have their own individuality and no matter how simple or inexpensive they are, may still be made pleasing and dignified and give distinction and charm to the entire farmstead by the simple application of architectural treatment. Is it any wonder, then, that the barn illustrated above is conceded by progressive farmers and experienced barn builders to be a masterpiece?

The "HONOR BILT" Gothic Roof Barn—Already Cut and Fitted—owes its widespread popularity to the "know-how" of our experienced barn architects who designed and proportioned its graceful roof lines; it owes its durability to the quality materials that are specified in its construction and to

the way the materials have been figured out to carry maximum loads and stay rigid and plumb even under severest conditions; it owes its economy to the big saving made possible by our wonderful already cut system of construction and the ease in which it can be erected when our simple working plans and complete instructions are followed.

This barn is not a novelty, but a practical, economical structure that combines all of the best features of the rectangular barn and the beauty, symmetry and utility of the round roof. It permits of a generous loft and, what is more vital, the loft is as open and unobstructed as an airship hangar, because the roof itself is self supporting, each set of ribs creating an independent arch and forming a very rigid completed structure. The graceful sweep of the roof, moreover, insures quick and perfect drainage of all surface water and offers the least possible resistance to high wind pressure.

The erection of an "HONOR BILT" Already Cut and Fitted Gothic Roof Barn is so simple that many of our customers have built them without experienced carpenter labor of any kind. The same principles recommended for the construction of the side and end walls of the two aforementioned types are used. Detailed drawings are furnished, showing how the rafters are built. This is really such an easy job that a boy can do the work. Each arch on completion is raised with a gin pole block and tackle, secured in place and the barn is then ready for the sheathing. An added advantage is that little if any scaffolding is needed to erect the roof.

An "HONOR BILT" Gothic Roof Barn will not only pay for itself over and over again in everyday service, but will add more than its cost in the increased value it gives to the farm as a whole. If you build today and sell tomorrow, this barn, like every other "HONOR BILT" Modern Barn will pay a profit on the investment.

"HONOR BILT" SPECIFICATIONS

Showing Sizes for Framing Lumber for Barns
28 feet and wider.

SHINGLES—Extra Clear 5 to 2 Red Cedar Wood Shingles or Oriental Slate Saturated 4-in Style Asphalt Shingles.

SHEATHING—A good grade of 1x4-inch Yellow Pine roof boards, spaced 2 inches apart, are furnished. For Asphalt Shingles 1x4-inch square edge boards, laid close together, are furnished.

RIDGE BOARD—2x4-inch for barns 28 feet wide. 2x6-inch for barns wider than 28 feet. No. 1 Yellow Pine. Already Cut and Fitted.

COLLAR BEAMS—2x6-inch No. 1 Yellow Pine, spiked to every set of rafters. Already Cut and Fitted.

GOthic RAFTERS—Built up of four pieces 1x3-inch for barns 28 feet wide. Rafters for barns 30 feet and wider built up of five pieces of 1x4 inches. All long leaf Yellow Pine. Rafters spaced 2 feet on centers.

CABLE WIND BRACE—2x10 inches No. 1 Yellow Pine, two furnished for each eable end. Already Cut and Fitted.

TOP PLATE—Double 2x6-inch No. 1 Yellow Pine. Already Cut and Fitted.

RAFTER ENDS—2x4-inch No. 1 Yellow Pine. Already Cut and Fitted.

STUDS—2x6-inch No. 1 Yellow Pine spaced 4 feet on center. Already Cut and Fitted. Studs tripled at all corners and under rafters. Double studs at all door openings.

RAFTER TIES—2x6-inch and 2x8-inch No. 1 Yellow Pine. Already Cut and Fitted.

SIDING—Yellow Pine or Cypress double siding put on vertically.

NAILING GIRT—2x6-inch No. 1 Yellow Pine, approximately 3 feet apart. Already Cut and Fitted.

JOISTS—2x8-inch No. 1 Yellow Pine for barns 30 feet and less in width. Barns over 32 feet in width have 2x10-inch No. 1 Yellow Pine joists. All joints spaced 18 inches apart. Already Cut and Fitted.

BRIDGING—Each span of joists crossed with 1x3-inch No. 1 Yellow Pine.

MOW FLOOR—1x6-inch Plank sanded and grooved No. 1 Yellow Pine.

CIRCLERS—1 piece 2x6-inch No. 1 Yellow Pine for barns 28 feet wide.

3 pieces 2x10-inch No. 1 Yellow Pine for barns 30 and 32 feet wide.

4 pieces 2x10-inch No. 1 Yellow Pine for barns wider than 32 feet.

All corners. Already Cut and Fitted.

GIRDER POST—4x6-inch solid No. 1 Yellow Pine with 6x6-inch bolsters for barns 32 feet and less in width.

6x8-inch solid No. 1 Yellow Pine, with 6x6-inch bolsters for barns over 32 feet wide.

WALL PLATE—Double 2x6-inch No. 1 Yellow Pine. Already Cut and Fitted.

ANCHOR BOLTS—1x10-inch complete with washers.

NOTE—These specifications do not apply to barns under 28 ft. in width.

GET OUR LOW—FREIGHT PAID—"DIRECT TO YOU" PRICE ON YOUR BARN

SEARS, ROEBUCK AND CO.

W L S World's Largest Store

504

11

This page is reprinted by arrangement with Sears, Roebuck and Co. and is protected under copyright. No duplication is permitted.

