

AGRICULTURE: OUR COUNTY'S HERITAGE

**ROBERT BITZ AND
HARVEY SKEELE**



THE MAIN FARM



THE FEED MILL





1937

Table 5 Changes in New York Agriculture from US Census						
Year	Number of Farms	Land in Farms (000's acres)	Value of Farms (000's \$)	Total Farm Sales (000's \$)	Livestock Sales (000's \$)	Crop Sales (000's \$)
1850	170,621	19,119	554,547			
1860	196,990	20,975	803,344			
1870	216,253	22,191	1,018,286			
1880	241,058	23,781	1,056,177			
1890	226,223	21,962	968,127			
1900	226,720	22,648	888,134			
1910	215,597	22,030	1,186,746			
1920	193,195	20,633	1,425,062			
1930	159,806	17,980	1,315,905	342,544	246,244	96,300
1940	153,238	17,170	947,074	242,417	167,052	75,365
1950	124,977	16,016	1,467,452	630,400	466,248	164,152
1960	82,356	13,490	1,971,152	930,133	554,347	375,786
1969	51,909	10,148	2,771,886	979,000	730,978	244,732
1978	43,075	9,461	6,314,665	1,861,266	1,325,936	535,330
1987	37,743	8,416	8,263,226	2,441,860	1,740,508	701,352
1997	31,757	7,254	9,102,191	2,834,512	1,834,095	1,000,417
2007	36,352	7,147	16,322,411	4,418,634	2,856,706	1,561,927

Table 128 Comparison in the Production of NY Farm Products in 1900 and 2007		
Product	1900	2007
Gallons of milk produced	773 million	1,407 million
Milk production per cow	4,426 pounds	19,303 pounds
Eggs produced	62 million dozen	93 million dozen
Apples produced	24 million bushels	31 million bushels
Grapes produced	124,000 tons	180,000 tons
Vegetable acres	107 thousand	160 thousand
Corn bushels	20 million	71 million*
* An additional 8.6 million tons of corn silage also produced in 2007		
Note: 2007 information from New York Agricultural Statistics		



ALLIS CHALMERS COMBINE
BY BROODER HOUSES



HAULING GRAIN



THRESHING IN THE FIELD



WOOD SLEDS



SHOCKING CORN

Table 4

Number of Various Livestock in Onondaga County from Census Figures

Year of Census	Sheep	Horses	Swine	All Cattle	Beef Cows	Working Oxen
1825	118,441	9,871	54,140	47,810		
1835	121,845	17,620	50,284	49,533		
1845	136,311	16,968	52,907	49,498		
1855	94,202	17,330	31,539	50,228		2,454
1865	134,348	14,952	29,917	38,729		683
1875	47,859	15,441	31,499	53,223		
1890	43,968	17,895	24,059	45,025		520
1900	26,870	17,223	19,719	55,893	1,668	
1910	10,760	16,532	21,453	59,092		
1920	8,710	9,329	19,483		1,231	
1930	8,810	8,345	6,403	50,844	561	
1940	4,115	8,507	4,918	48,762	409	
1950	2,451	1,016	5,393	48,244	1,074	
1960	2,124	1,016	3,864	46,416	1,378	
1970	1,135	1,334 (a)	1,827	35,634	2,009	
1982	557	1,131 (a)	1,210	36,509	1,599	
1992	410	1,164 (a)	305	34,062	1,128	
2002	370	1,987 (a)	240	35,075	1,031	

(a) Includes horses and ponies

Table 6

Dairy Farms, Dairy Cows and Dairy Production Numbers in Onondaga County

Year	Number of farms with dairy cows	Number of dairy cows	Gallons of milk sold (000's)	Pounds of butter made on farms	Pounds of cheese made on farms	Pounds of milk per cow
1845		24,595		2,124,000	749,838	
1855		24,801	330,000	2,294,000	860,644	
1865		24,861	263,000	2,149,000	1,844,326	
1875		29,964	1,059,000	2,720,000	420,731	
1890		31,101	15,290,000	2,738,000	217,140	
1900	5,269	33,300	18,374,000	2,070,000	58,025	
1910		36,300	15,458,000	411,000	21,895	
1920		31,900	16,953,000	614,000	16,571	
1930	3,274	32,300	19,492,000	347,000	NA	5,480
1940	3,083	33,049	21,852,000	174,000	NA	5,780
1950	2,053	27,874	23,603,000	54,000	NA	6,810
1960	939	24,966	28,080,842			8,150
1970	462	23,403				10,855
1982	288	18,270				12,500 (a)
1992	190	17,554	38,180,000			16,000 (a)
2002	119	18,231	47,619,000			19,000 (a)

(a) Production per cow from NY Agricultural Statistics for Onondaga County



DUTCH BARN

WINNOWING
BOARD AND FLAIL





CORN SHELLERS

CORN PLANTER AND DIBBLE





LAND TILE



HOMEMADE ROLLER, COOPERSTOWN



THRESHING
MACHINE



COMPLIMENTS
OF
WALTER A. WOOD
MOWING & REAPING
MACHINE CO.
HOOSICK FALLS,
N. Y.
U. S. A.

TRIUMPHANT SUCCESS

THE MOST IMPORTANT AND VALUABLE INVENTION
OF THE 19TH CENTURY.

THE AMERICAN COW MILKER

A SURE CURE FOR
ACHING HANDS & KICKING COWS

By this Machine, Cows are Milked perfectly dry in from
2 to 3 minutes, and it has proven by practical use to be
more agreeable to the Cow than hand milking.

MEN OF LARGE OR SMALL CAPITAL

Your particular attention is solicited to this Invention, as an examination
of the Business, the Milker, the Cost, the Demand, the Sale and Profits will
set skepticism at defiance and Capitalists to thinking. Territory is fast being
secured by sagacious Business Men who are laying a sure foundation for
success.

American Cow Milking Machine Co.

EXPRESS PRINTING CO., No. 4 EAST SWAN ST., BUFFALO, N. Y.

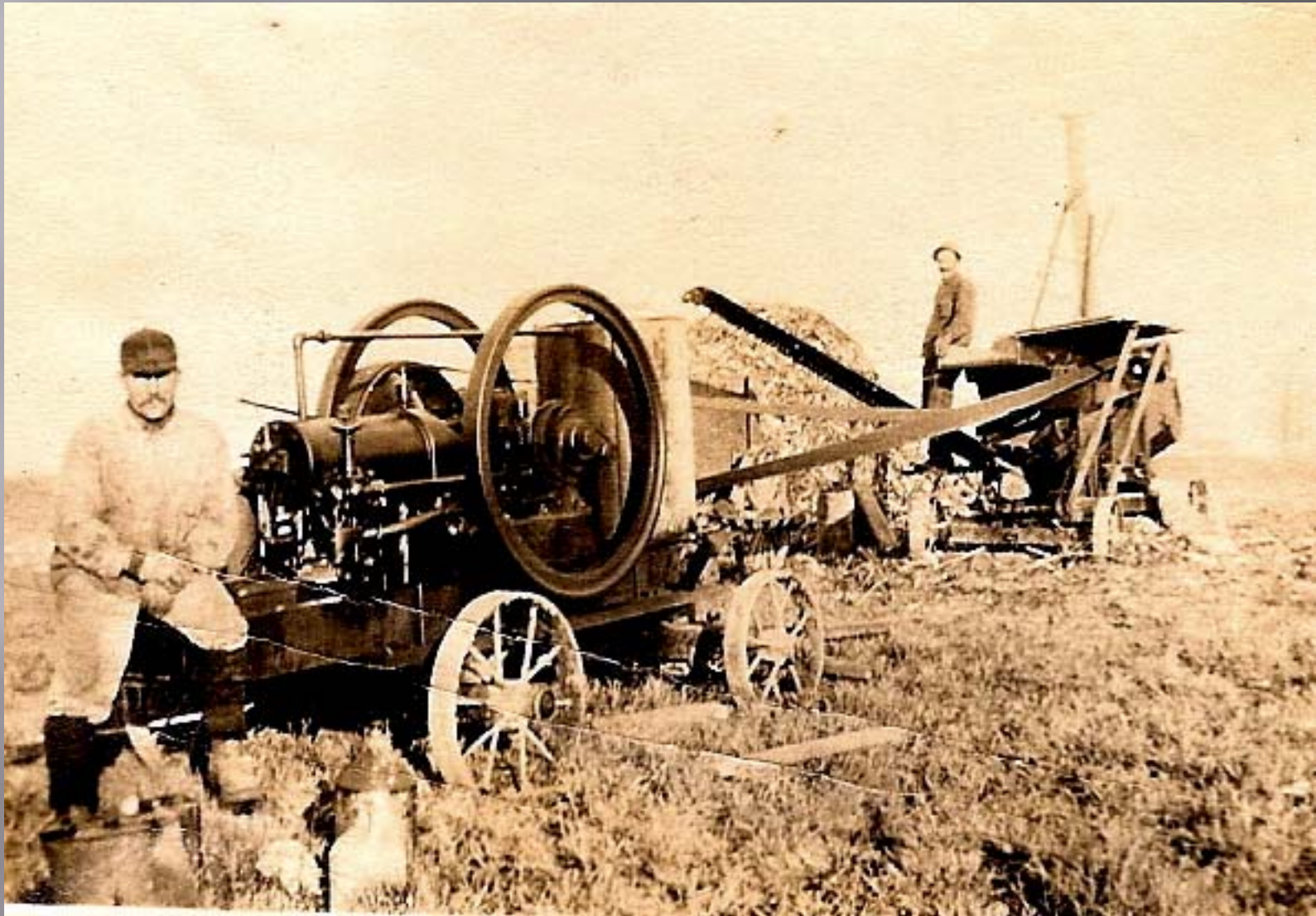


LOG BARN AT FARMER'S MUSEUM, COOPERSTOWN





SAP FOR MAPLE SYRUP



CORN HUSKER, 2 CYCLE ENGINE

Wilson's Hybrid Havana
Tobacco Seed.

SAME AS GROWN IN 1876, AND TRUE TO NAME.

Originated by

◁WM. WILSON & SON,▷

Plainville, Onondaga County, New York.

Our Seed is, acknowledged by all Manufacturers and Dealers as the Best Havana Seed Tobacco known to the trade.

Profitable to the Growers, and desired by the Manufacturers.

As Blood will tell in the animal kingdom, so Pure Seed will tell in the Vegetable.

Be sure you are right, then go ahead. None Genuine unless put up in packages bearing our Trade Mark (A Tobacco Seed Plant) on one side and directions for Sowing, Growing, and Handling on the other.

Don't be imposed upon, nor sow any but the Genuine Seed. Price, \$1 per oz.

WM. WILSON & SON, Originators,
Plainville, Onondaga Co., N. Y.

10VEN.



TOBACCO FIELD



HARVESTING TOBACCO



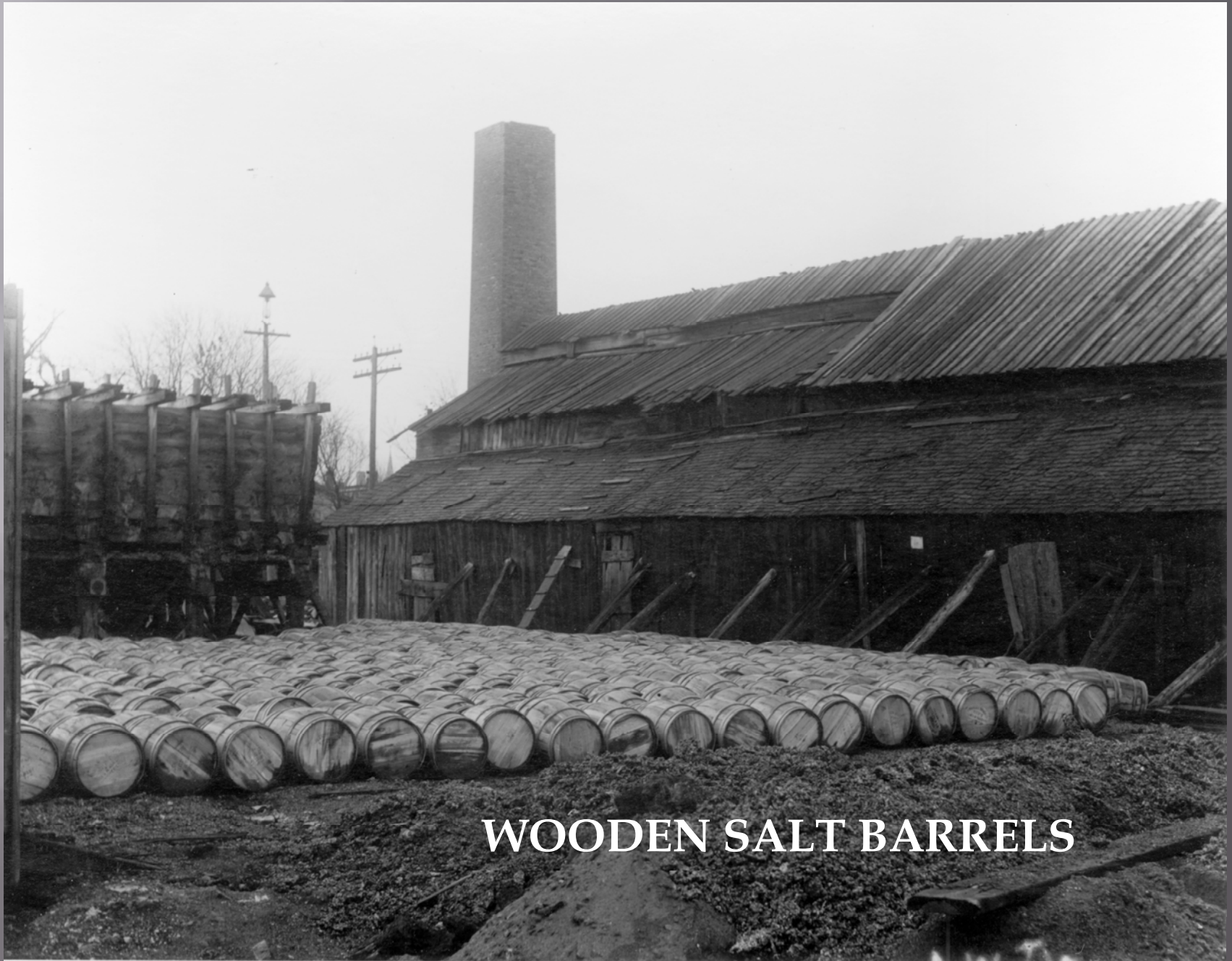
HAULING TOBACCO

HANGING TOBACCO





SALT LOG PIPES



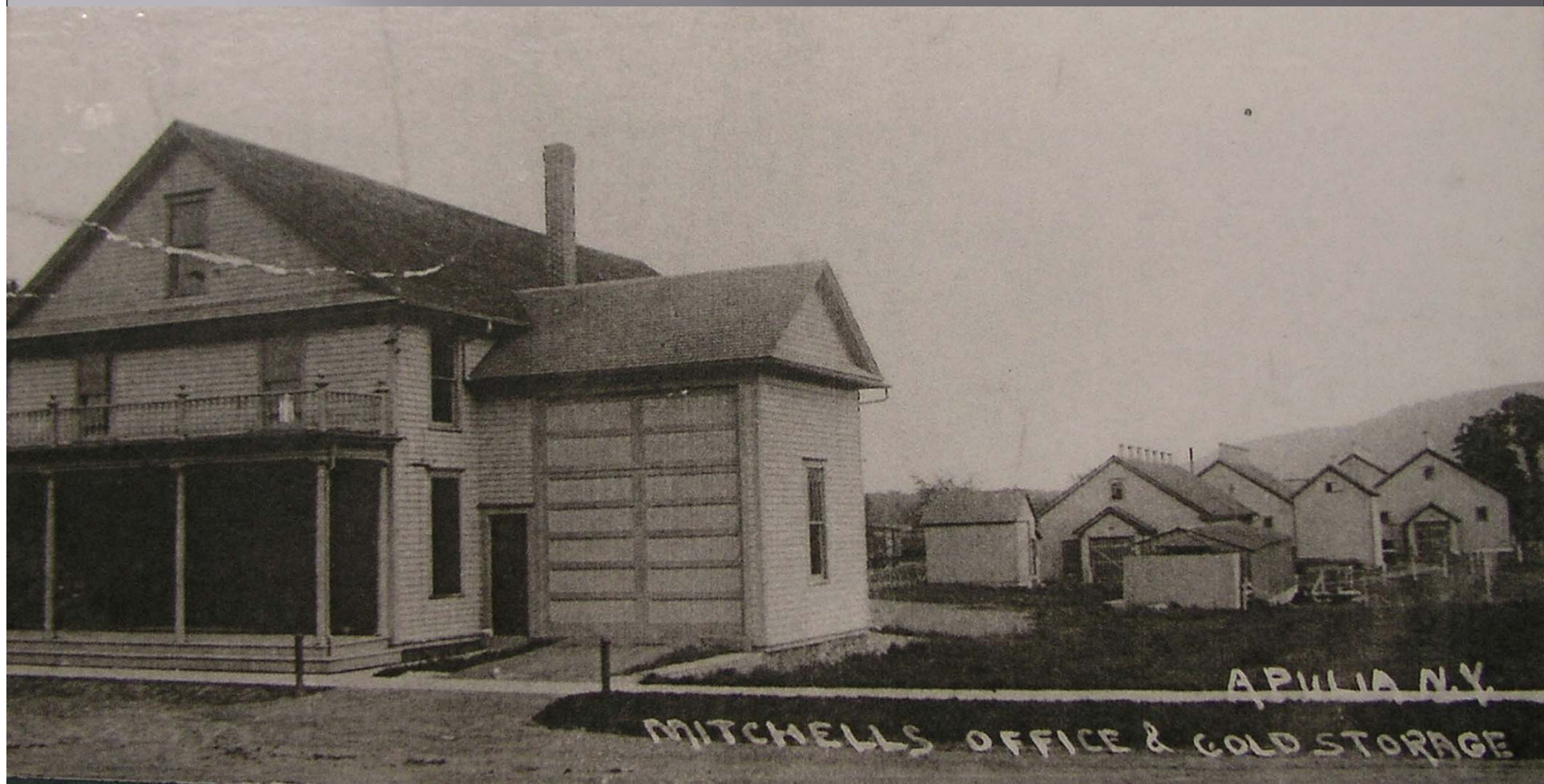
WOODEN SALT BARRELS



POTATO DELIVERY TO SYRACUSE FROM LAFAYETTE



HOG BUTCHERING IN LAFAYETTE



APULIA N.Y.
MITCHELLS OFFICE & GOLD STORAGE



BARRELING POTATOES ON GAYLORD FARM
(LAFAYETTE HISTORICAL SOCIETY)



PADDOCK STRAW FACTORY
ELBRIDGE



WINDHAUSEN FAMILY



DELIVERING MILK IN 1910
TIME OSCHNER



FARM BUREAU AGENT IN TROUBLE
(COOPERATIVE EXTENSION)

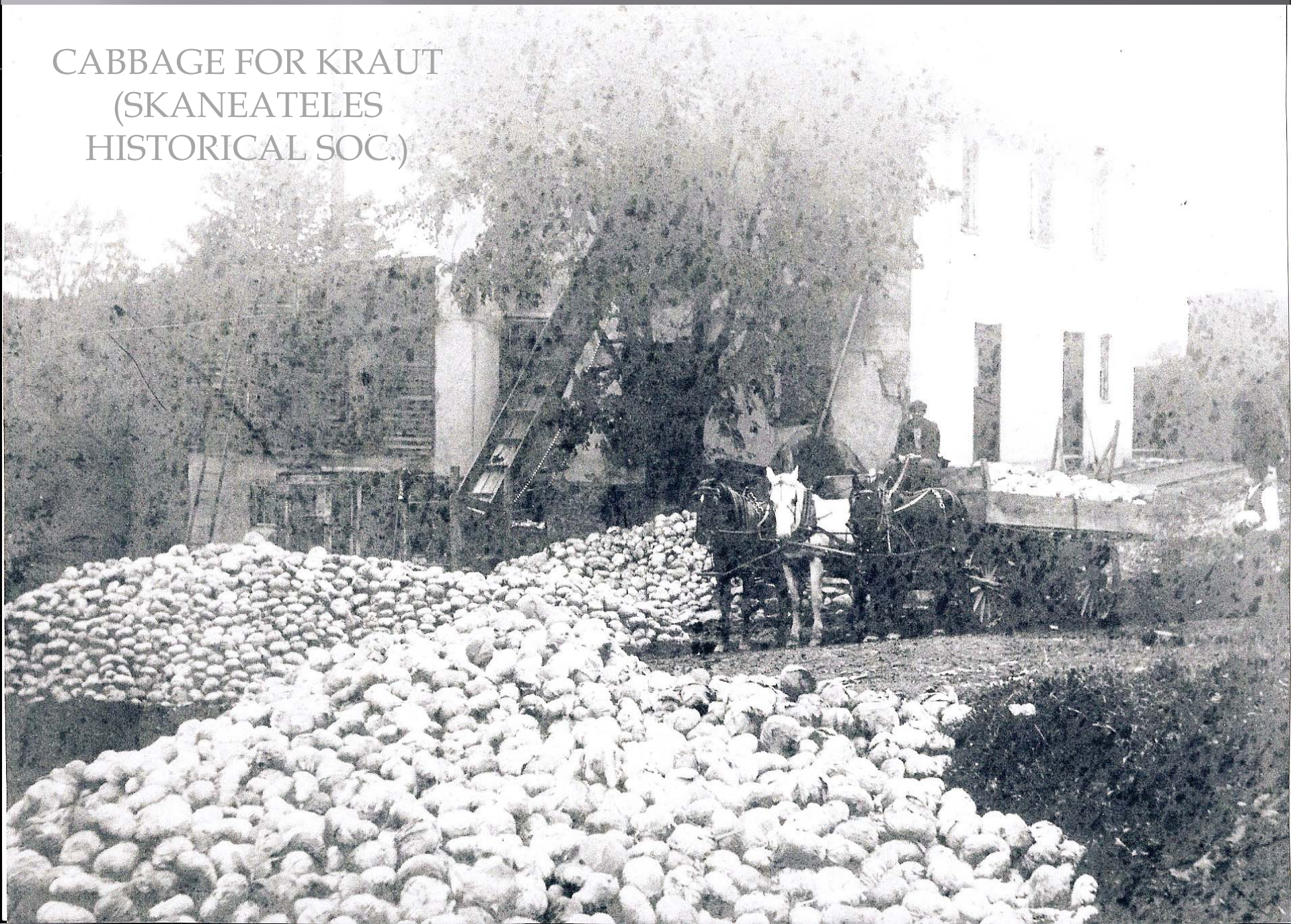


MILKING THE OLD FASHION WAY
(LAFAYETTE HISTORICAL SOCIETY)

SORTING TEASELS
(SKANEATELES HISTORICAL
SOC.)



CABBAGE FOR KRAUT
(SKANEATELES
HISTORICAL SOC.)

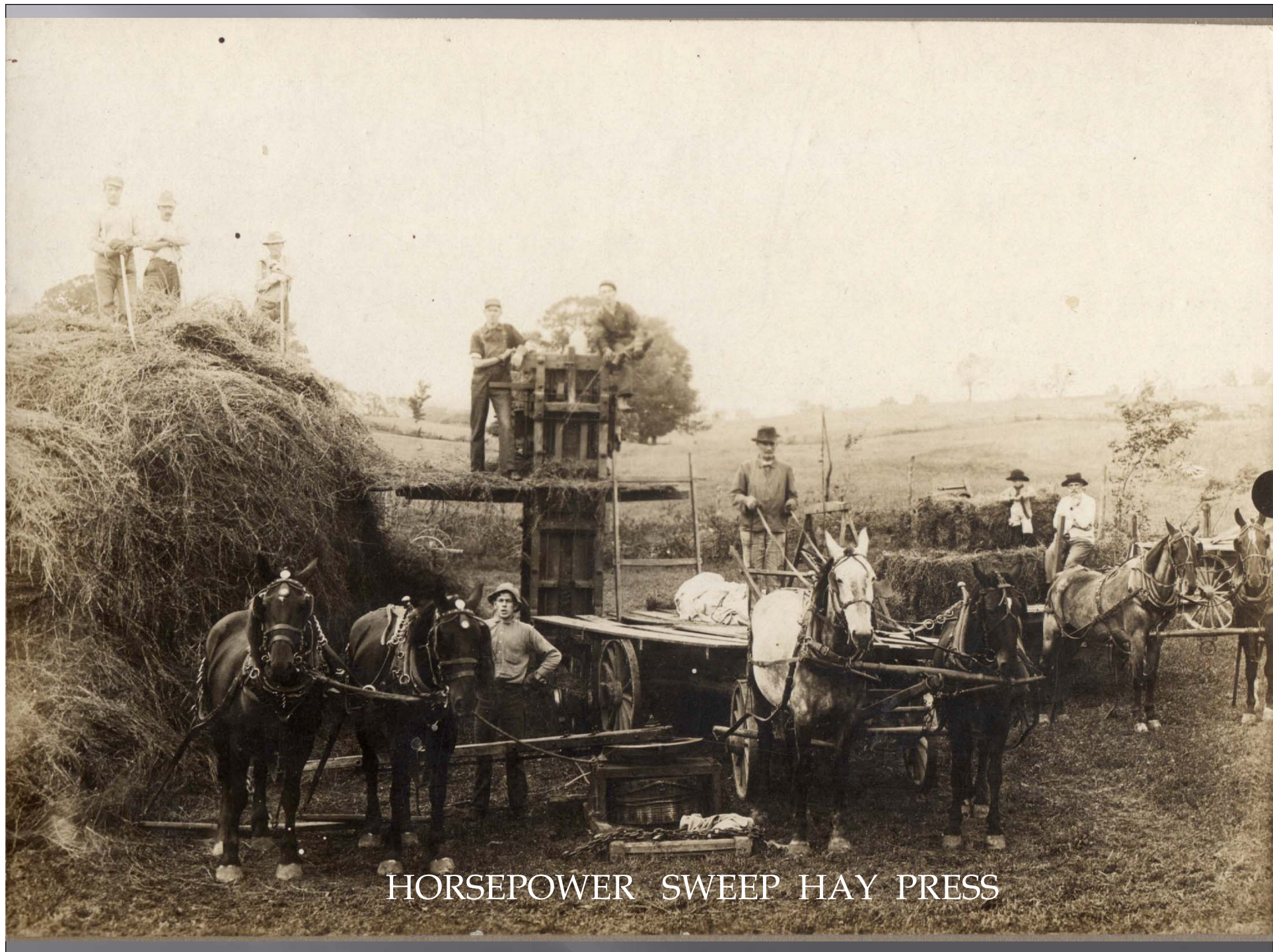




STEAM ENGINE, THRESHER AND WATER TANK
(ONANDAGA HISTORICAL SOC.)



Cutting and delivering ice was one of the many ways people made a living in the 1800's. Most business people had their own ice houses which were kept filled. It is believed the ice cutting business came to an end in the winter of 1929-30. Note the ice houses in the background.



HORSEPOWER SWEEP HAY PRESS



THRESHING MACHINE WITH STRAW
ELEVATOR
(TOBY SHEELLY, OTISCO)



Oxen Harrowing

HUDSON FAMILIES





DELIVERING TOBACCO IN BALDWINVILLE N.Y. IN 1897



HARVESTING
WILLOWS FOR
BASKETS



FABIUS CREAMERY



FABIUS CANNING FACTORY



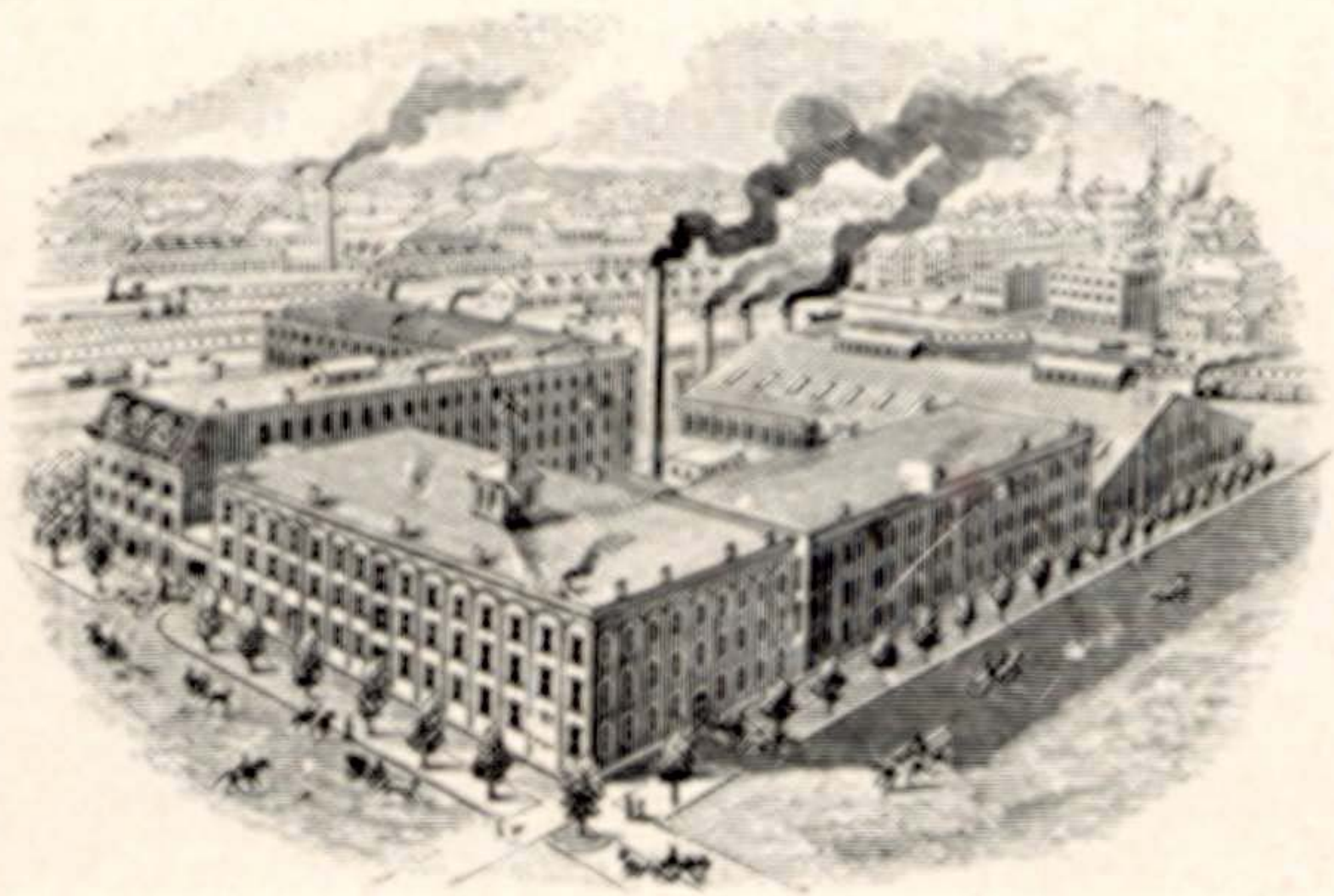
DELIVERING MAIL IN MANLIUS



MANLIUS
TOLL GATE



CANNING SWEET CORN IN CICERO



1876

SYRACUSE CHILLED PLOW



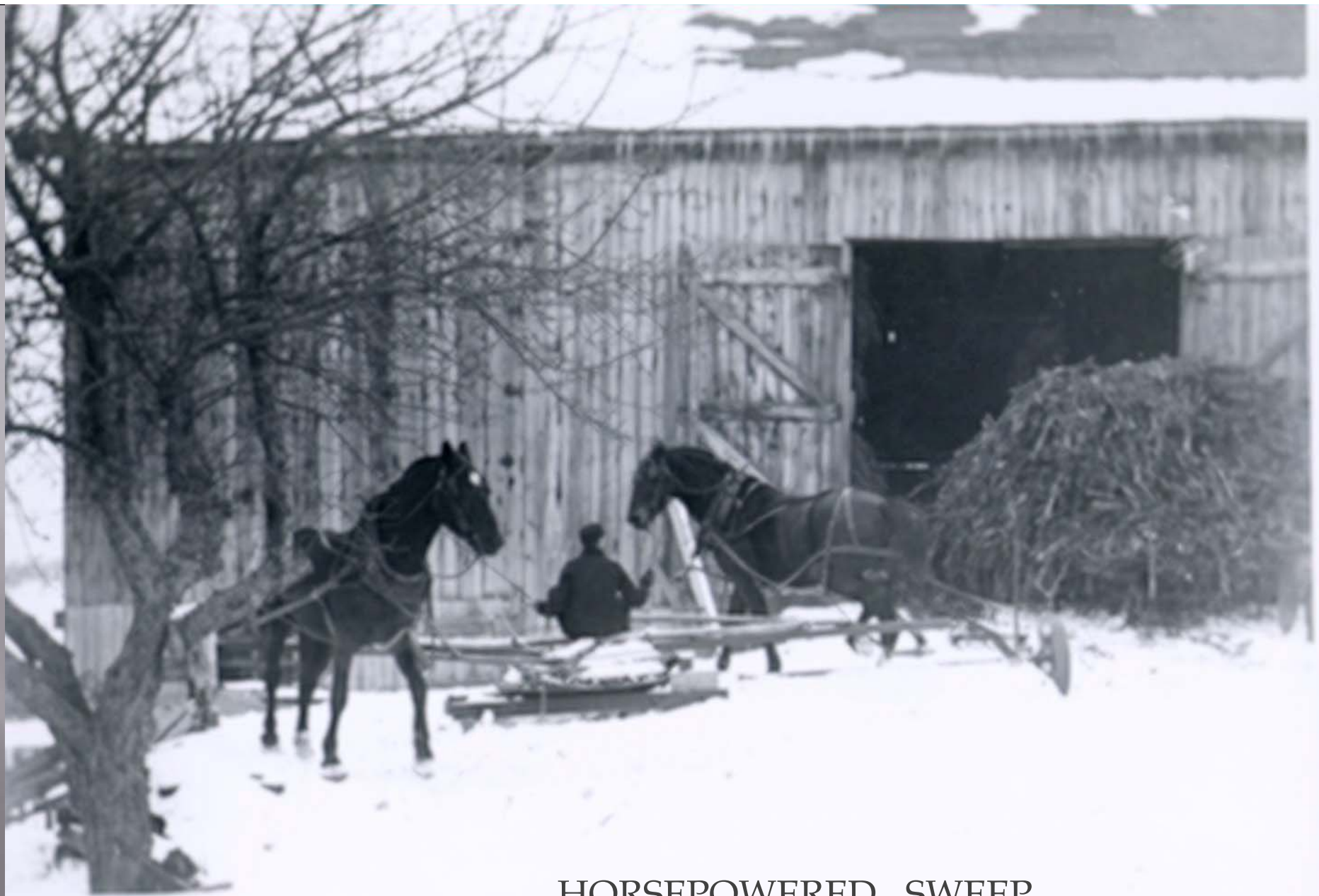
FARMER'S MARKET, CLINTON SQUARE, 1895



LOADING HAY

A sepia-toned photograph of a man in a field, wearing a hat and a light-colored shirt, sharpening a scythe. He is standing in a field of tall grass or weeds. In the background, there is a wooden fence and a large, leafy tree. The man is holding the scythe with both hands, and the blade is curved. The overall scene is rural and historical.

SHARPENING SCYTHE



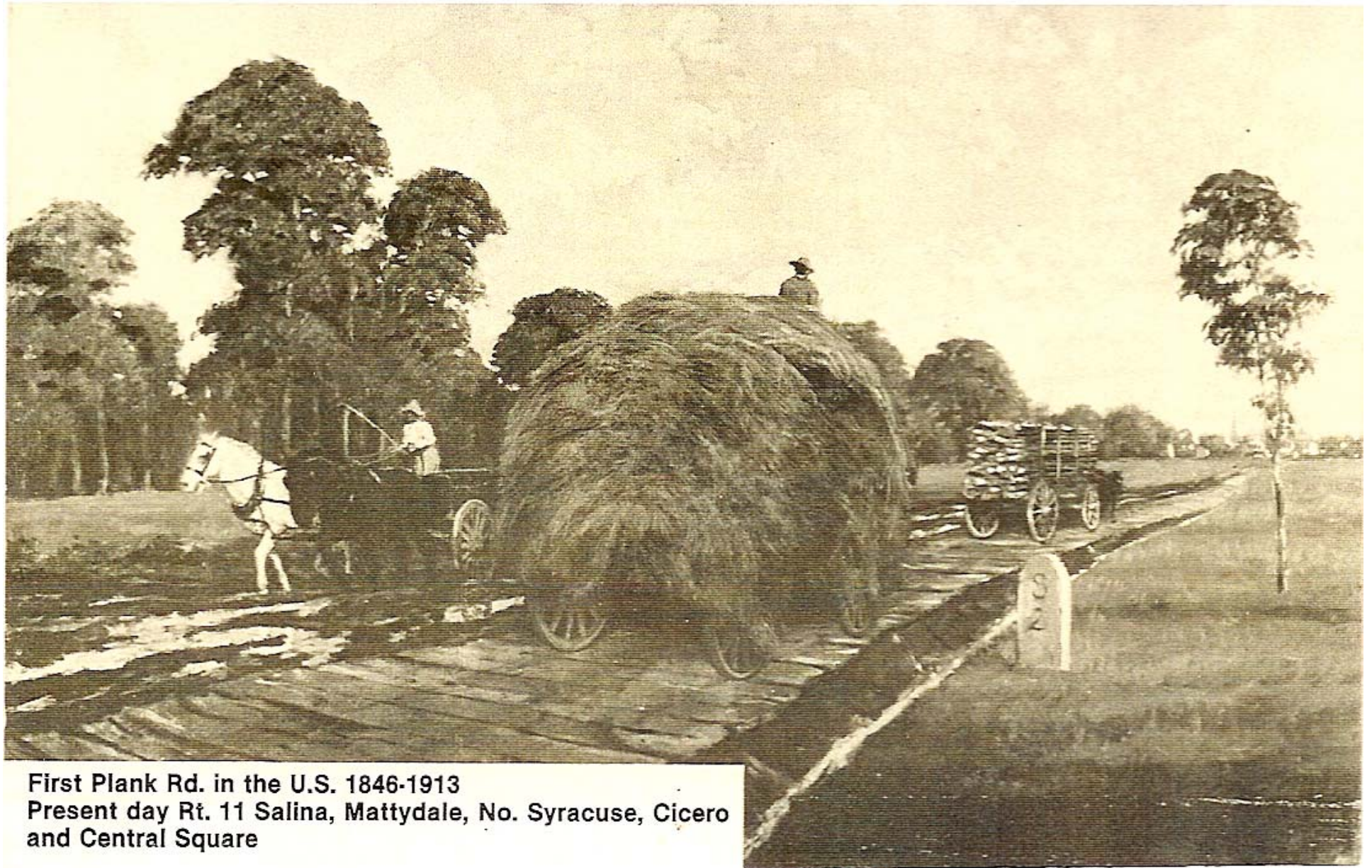
HORSEPOWERED SWEEP
CUTTING CORN STALKS



HORSE TREADMIL POWERING BUZZSAW



SILO FILLING WITH STEAM ENGINE IN CLAY



First Plank Rd. in the U.S. 1846-1913
Present day Rt. 11 Salina, Mattydale, No. Syracuse, Cicero
and Central Square