

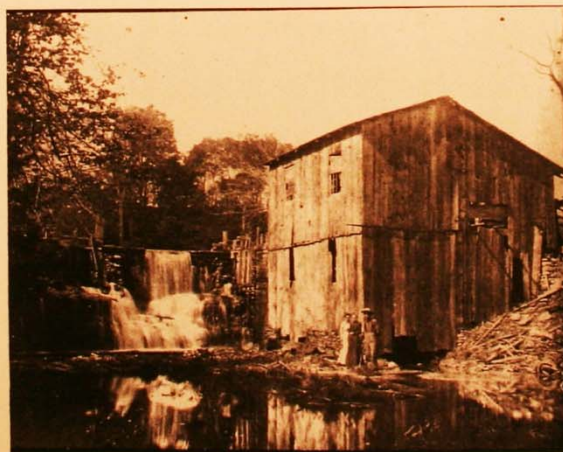
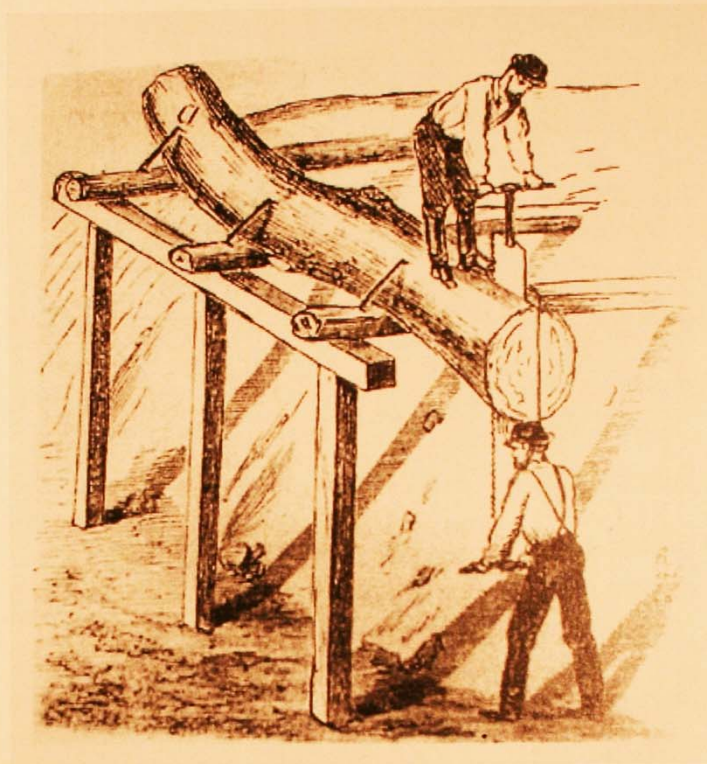
BUSINESES AND BUILDINGS IN FABIUS, PAST AND PRESENT

SANDY BEGLINGER
FABIUS HISTORICAL SOC.
JUNE 4, 2018





David Burr Map 1839



AS SETTLERS CAME IN THERE WAS A NEED FOR SAWN LUMBER. THE TOP PHOTO SHOWS THE HARD WAY TO CUT THE WOOD. THE BOTTOM PICTURE SHOWS A MILL IN FABIUS WHERE FALLING WATER COULD BE USED TO POWER A SAW MILL. MOVING WATER WAS ALSO USED TO GRIND GRAIN AND CARD WOOL. THE MANY STREAMS IN CENTRAL NEW YORK PROVIDED THE POWER FOR MANY MILLS.

THE BACKWATER OF THE MILL ON MILL STREET.
THIS MAY BE A SPILLWAY FOR EXCESS WATER. WE HAVE NO
PICTURE OF THE MILL WHEEL.



THE PICTURE TO THE LEFT SHOWS
HALL'S SUGAR HOUSE. IT WAS
LOCATED ON RT. 91, ABOUT
2 MILES NORTH OF FABIUS VILLAGE.
WITH SO MANY SUGAR MAPLE TREES,
MANY PEOPLE MADE MAPLE SYRUP.

IN 1836 " BRUCE'S ONONDAGA CENTENNIAL" LISTED THESE ESTABLISHMENTS:

4 grist mills

3 asheries

15 sawmills

5 tanneries

22 fulling mills

5 carding machines

BY 1845, ACCORDING TO BRUCE, THERE WERE:

3 grist mills

2 asheries

12 sawmills

4 tanneries

2 fulling mills

2 carding machines

(A fulling mill involves 2 processes: scouring and thickening of woolen cloth
by pounding.)

THE BRAMER AND PIERCE'S AGRICULTURAL WORKS
WAS ESTABLISHED IN 1838.

IT EMPLOYED 15 TO 20 WORKERS.

THE BUILDING WAS A 3-STORY STRUCTURE. THE BASEMENT CONTAINED
THE FOUNDRY AND FORGING SHOP. THE SECOND STORY WAS THE GENERAL
MACHINE SHOP. THE THIRD STORY HAD THE WOOD-WORKING MACHINERY
AND PAINT SHOP.

IT MANUFACTURED HORSE MOWERS, SEPARATORS, CLOVER HULLERS,
ALL KINDS OF CASTINGS WHICH COULD BE ORDERED, AND THE FAMOUS
"YOUNG WARRIOR" MOWER (WHICH WAS INVENTED BY FRANKLIN BRAMER,
SON OF DAVID BRAMER WHO HELPED FOUND THE STORE).

WELCOME BASE BURNER



FOR SALE BY

LEWIS BRAMER,

FABIUS, N. Y.

ABOUT 1870 FABIUS VILLAGE HAD:

2 general stores

3 milliner stores

2 drug stores

1 tin shop

3 blacksmith shops

2 wagon shops

2 shoe shops

1 harness shop

1 furnace and machine shop

1 cheese factory

1 tannery

1 grist mill



THE FABIUS CREAMERY AND MILK FACTORY

ABOUT 1890 THIS LARGE CREAMERY WAS ERECTED IN FABIUS VILLAGE BY JOHN S. CARTER OF SYRACUSE TO PROCESS THE FARMERS' MILK INTO CHEESE, BUTTER, AND MILK SUGAR. IN 1893, THE NEWLY ORGANIZED FABIUS CREAMERY COMPANY TOOK OVER THE PLANT.

IN 1900, IT WAS THE LARGEST IN THE STATE WITH MORE MILK BROUGHT IN THAN ANY OTHER CREAMERY IN NEW YORK STATE.

EVENTUALLY THE COMPANY WAS SOLD TO THE BORDEN COMPANY WHICH SHIPPED MILK OUT OF APULIA STATION.

THE BUILDING IS LOCATED ON THE WEST END OF FABIUS VILLAGE ON RT.80.



FABIUS CANNING FACTORY

THE FABIUS CANNING FACTORY OPERATED AS A MARKET FOR PEAS AND CORN RAISED BY LOCAL FARMERS. IT WAS INCORPORATED IN 1900, PASSED ON TO J. P. DORRANCE, AND SOLD TO E. H. ROWLEY. "ROWLEY'S PEAS" GAINED A WIDE REPUTATION FOR EXCELLENCE, AS DID HIS BEANS. THE COMPANY ALSO CANNED TOMATOES, SUCCOTASH AND SEVERAL VARIETIES OF CORN.

THIS FACILITY CLOSED ABOUT 1924.

IT WAS LOCATED ACROSS FROM THE CURRENT FABIUS POST OFFICE.

mill st. 1909.



MILL STREET IN 1909. A MILL WAS ESTABLISHED THERE EARLY WHICH WAS POWERED BY WATER. LATER A GASOLINE ENGINE WAS ADDED.



THE MILL ON MILL STREET. THERE IS NO DATE ON THE PHOTO, BUT THE CAR DATES TO THE 1920s.



CORNER OF MAIN STREET AND MILL STREET

THIS PICTURE WAS TAKEN IN THE 1930S. AT ONE TIME HAROLD HALL RAN A GARAGE HERE. HE ALSO SERVED AS A MECHANIC FOR THE DISTRICT'S SCHOOL BUSES.



THIS PICTURE IS OF THE SAME GARAGE. ROY POWERS OWNED THE BUSINESS FROM 1961-1967. HE WAS A MECHANIC, DID CAR INSPECTIONS, AND SOLD CAR PARTS. HE HAD 2 GAS PUMPS TO SELL ASHLAND GAS.



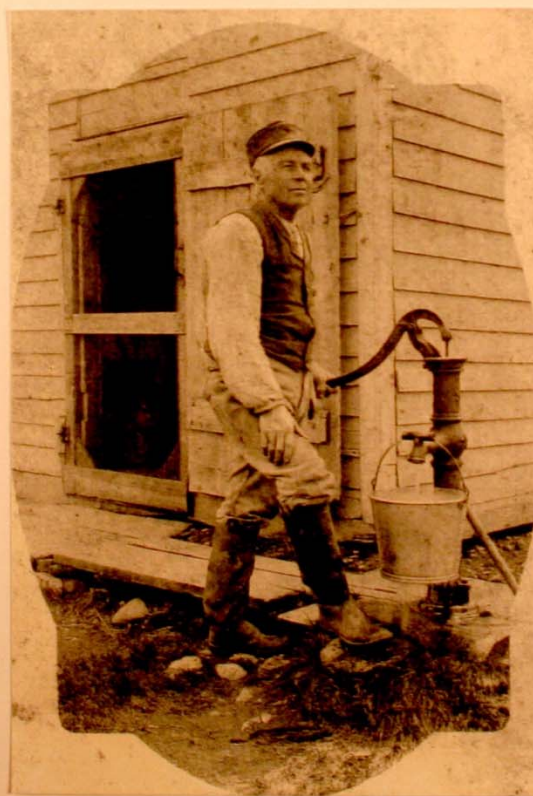
MILL STREET
NOW

HOST BLACKSMITHING SHOP





FABIUS VILLAGE MEAT MARKET 1900



ORRIN SISSON IS AT THE PUMP.



ORRIN AND SARAH SISSON OPERATED THE MEAT MARKET.



THE STORE WAS OPERATED BY SAMUEL GALLINGER. OTHERS WHO ONCE OWNED THE STORE ARE MRS. ELIZABETH DEMONG, MR. HALLER AND MR. LAHEY. IT WAS LATER OPERATED AS FABIUS GRILL.



AFTER THE FABIUS GRILL CLOSED, THE BUILDING WAS TURNED INTO APARTMENTS. IT IS NOW EMPTY AND FOR SALE.

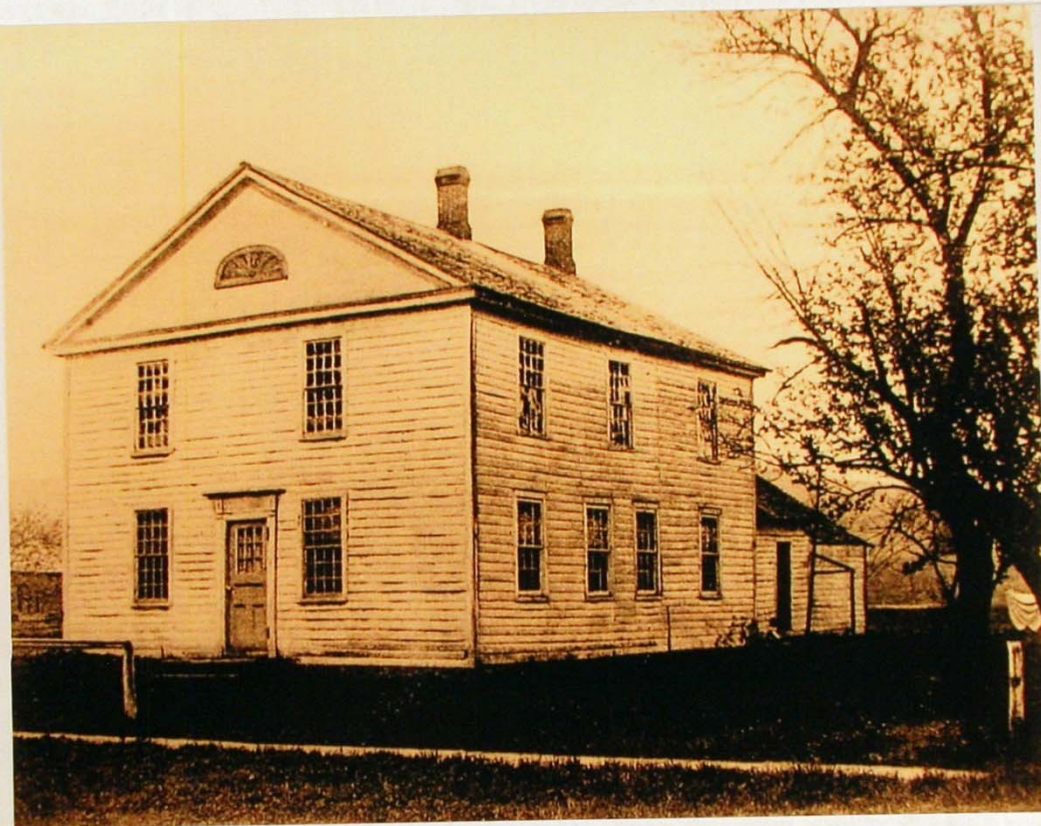


RUDD'S STORE (NE CORNER OF RT. 80 AND RT. 91)



THIS BUILDING ONCE STOOD NEAR SKEELE'S CORNER, BUT WAS MOVED NEAR THE CORNER OF POMPEY STREET (ROUTE 91) AND MAIN STREET. IT WAS OPERATED BY MILTON RUDD FROM 1924 UNTIL IT WAS CLOSED. THE BUILDING NOW CONTAINS APARTMENTS. NOTE UNPAVED STREETS.





BELDEN HOUSE

IT IS REPUTED TO BE THE FIRST TAVERN IN FABIUS. JAMES BELDEN WAS BORN HERE. LATER IN HIS LIFE HE RETURNED TO FABIUS, PURCHASED THE HOMESTEAD FROM THE CALDWELL ESTATE, MOVED THE HOUSE ONTO KEENEY ROAD, AND ERECTED THE SOLDIERS' MONUMENT.



THE CUSHING HOTEL (7856 MAIN STREET)

FABIUS'S MOST PICTURESQUE TAVERN, WITH DORIC COLUMNS AND A FANCY GALLERY ON THE ROOF, WAS OPERATED IN THE LATE 1890'S BY CHARLES VINCENT, WHO HAD A DINING HALL AND ROOMS TO RENT TO OVERNIGHT GUESTS. IT WAS LATER OWNED BY ELWIN CUSHING.

IN THE 1920'S MR. NARE OWNED IT. THERE WAS A BALLROOM UPSTAIRS FOR DANCING, CARD PARTIES AND MOVIES.

**CUSHING HOTEL IN
FABIUS**





1945

THE CUSHING HOTEL BURNED IN 1945. THE FIRE WAS ATTRIBUTED TO THE MALFUNCTION OF A HEATER BEING USED IN A GARAGE AREA OF THE BUILDING WHERE A YOUNG MAN, WHO HAD RECENTLY RETURNED FROM SERVICE IN THE WAR, WAS WORKING ON A CAR. A MUCH SMALLER BUILDING WAS BUILT ON THE SITE AND IT SERVED AS A RESTAURANT FOR MANY YEARS. THEN IT WAS TURNED INTO A HOUSE.



**NEWTON BENEDICT, THE "LIVE AND LET
LIVE" MERCHANT OF FABIUS**



**NEWTON BENEDICT RAN VARIOUS
BUSINESSES FROM THESE TWO
BUILDINGS INCLUDING AN
UNDERTAKING ESTABLISHMENT,
FURNITURE STORE AND GENERAL
MERCHANDISE STORE (BOTTOM).**



HAMILTON & SHEA'S STORE AND DRY GOODS DEPT.
THE PARTNERSHIP WAS FORMED IN 1906, BUT BROKE UP IN 1912.

HAMILTON'S I.G.A. STORE



THE CORNER OF KEENEY (CEMETERY) ROAD AND MAIN STREET WAS LONG THE SITE OF THIS LARGE BUILDING WHICH HOUSED HAMILTON'S STORE. UPSTAIRS WERE SOCIAL AND MEETING ROOMS. THE BUILDING BURNED IN 1941 AND WAS REPLACED WITH A SMALLER BUILDING.

ENLARGING SHEA'S STORE



MOVING BUILDINGS WAS VERY COMMONLY DONE IN THE HISTORY OF THE VILLAGE OF FABIUS. HERE THE RUMAK IGA STORE WAS MOVED FROM THE CORNER OF KEENEY ROAD AND MAIN STREET TO THE REAR OF SHEA'S STORE. THE INSCRIPTION ON THE BACK OF THE PICTURE TELLS US THAT ONE HOUR AFTER THE PICTURE WAS TAKEN THE BUILDING WAS SHOVED INTO PLACE AND A WALL WAS BUILT UNDER IT. THE IGA STORE WAS PARTIALLY DESTROYED BY FIRE IN 1957. IT WAS MOVED SHORTLY AFTER THAT.

RYAN'S HOTEL

Fabius, N. Y.

On Route U. S. 80

Meals — Lunches

Legal Beverages

Modern

Rest Rooms

SUPERIOR MATCH CO., CHICAGO, U. S. A.

3c FABIUS BEAUTY SHOP 3c
FABIUS BARBER SHOP

EMMA M. JACOB, PROP.

DORIE and THERESA

• PERMANENT WAVING •

Phone 2671

FABIUS, N. Y.

1954 JANUARY 1954

SUN · MON · TUE · WED · THU · FRI · SAT

| New Moon 5th | First Quarter 12th | Full Moon 19th | Last Quarter 27th | 1 | 2 |
|-----------------|-----------------------|-------------------|----------------------|---|---|
| | | | | | |





M.G. SHEA STORE
"IN THE HEART OF THE CITY"
FABIUS, NY

Bob Penoyer & Hav Houck
Fresh Meats - Cut To Order
Phone: (315) 683-5211



"OLD APULIA" STORE AND POST OFFICE
IN 1874 ELISHA PECK OWNED THIS HOME AND COMBINATION STORE
AND POST OFFICE.



CORNUE'S RED + WHITE STORE IN APULIA



HILL SERVICE STATION

EXPERT AUTO REPAIRS

USED CARS and PARTS

Phone Fabius 4511

APULIA, N. Y.





HOTEL APULIA



This first Chair Factory was in Apulia Station opposite Old Mill Pond and former Roscoe Case Farm.
Ransford Cornue, brother of Mrs. R. Case, is on the top row, second from the left. Photo was given by Greta Case.

THE FIRST CHAIR FACTORY WAS IN APULIA STATION OPPOSITE THE OLD MILL POND AND THE FORMER ROSCOE CASE FARM. IT WAS STARTED IN 1874. IT IS CLAIMED THAT AS MANY AS 33,000 CHAIRS WERE MADE THERE PER YEAR. IT BURNED DOWN IN 1903.



BRIGGS STORE IN APULIA STATION



FRANK PORTER'S STORE IN APULIA STATION

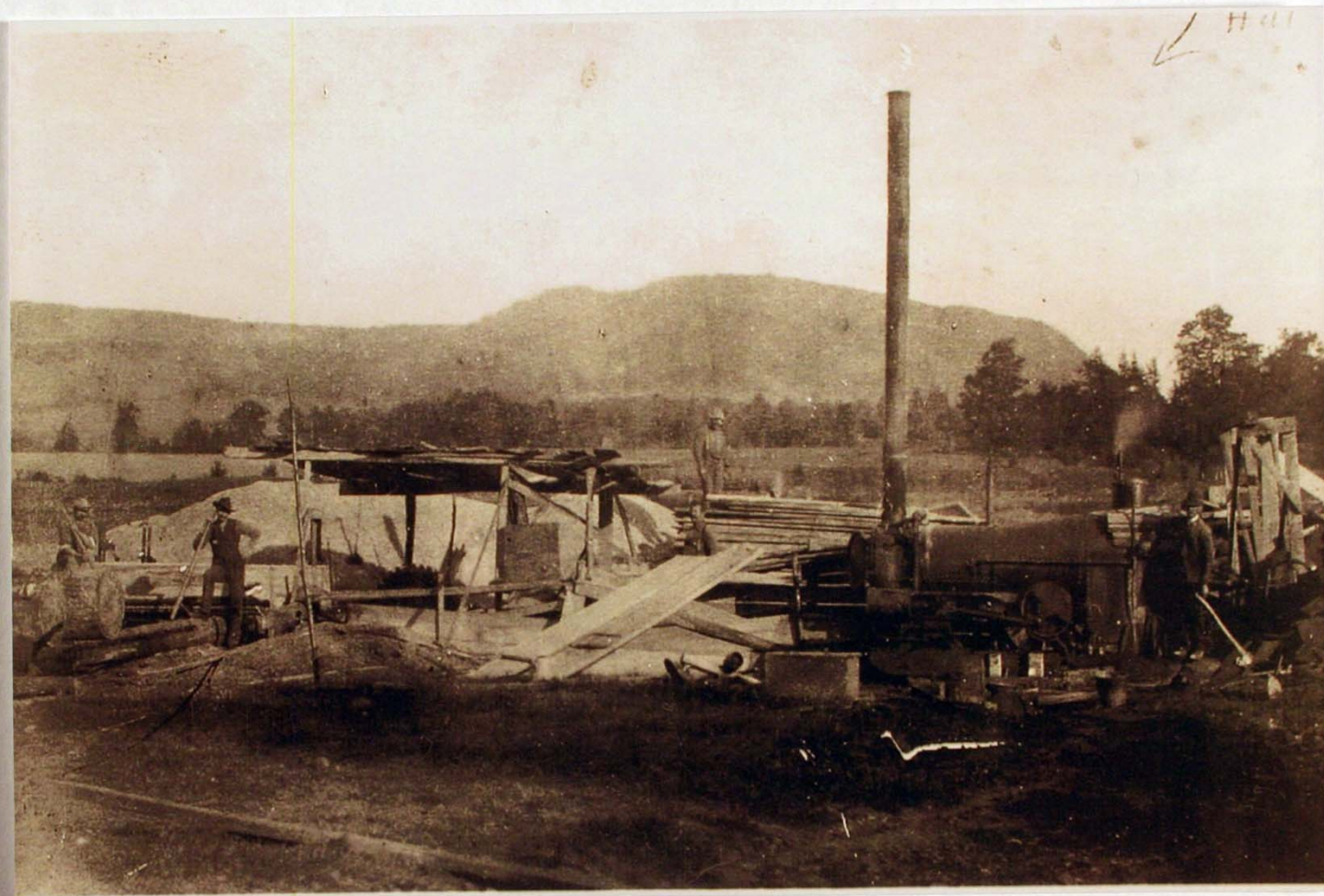
FRANK AND ANNA PORTER LIVED UPSTAIRS OVER THE STORE DURING THE 1920'S AND 1930'S. THIS WAS A GENERAL STORE WITH A SODA FOUNTAIN AND BARBERSHOP (SHAVE AND HAIRCUTS FOR MEN) DOWNSTAIRS FOR MANY YEARS.

THE GARAGE TO THE EAST WAS THE "PORTER GAS STATION", WITH A GAS PUMP IN FRONT OF THE BUILDING. THEY ALSO SOLD KEROSENE FOR USE IN KEROSENE LAMPS AND LANTERNS.

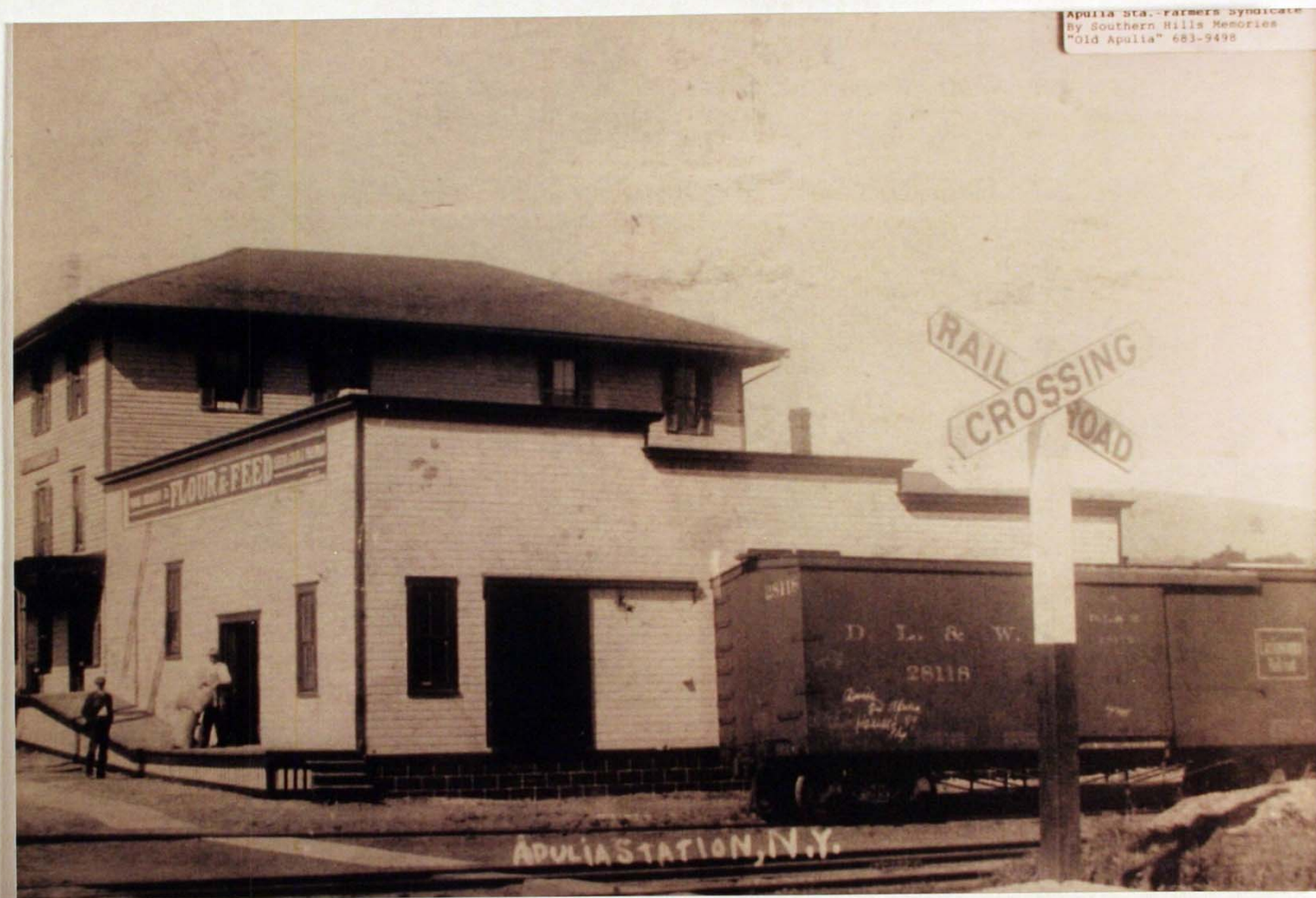
THE BUILDING REMAINED EMPTY FOR AWHILE AND WAS CONVERTED TO APARTMENTS.



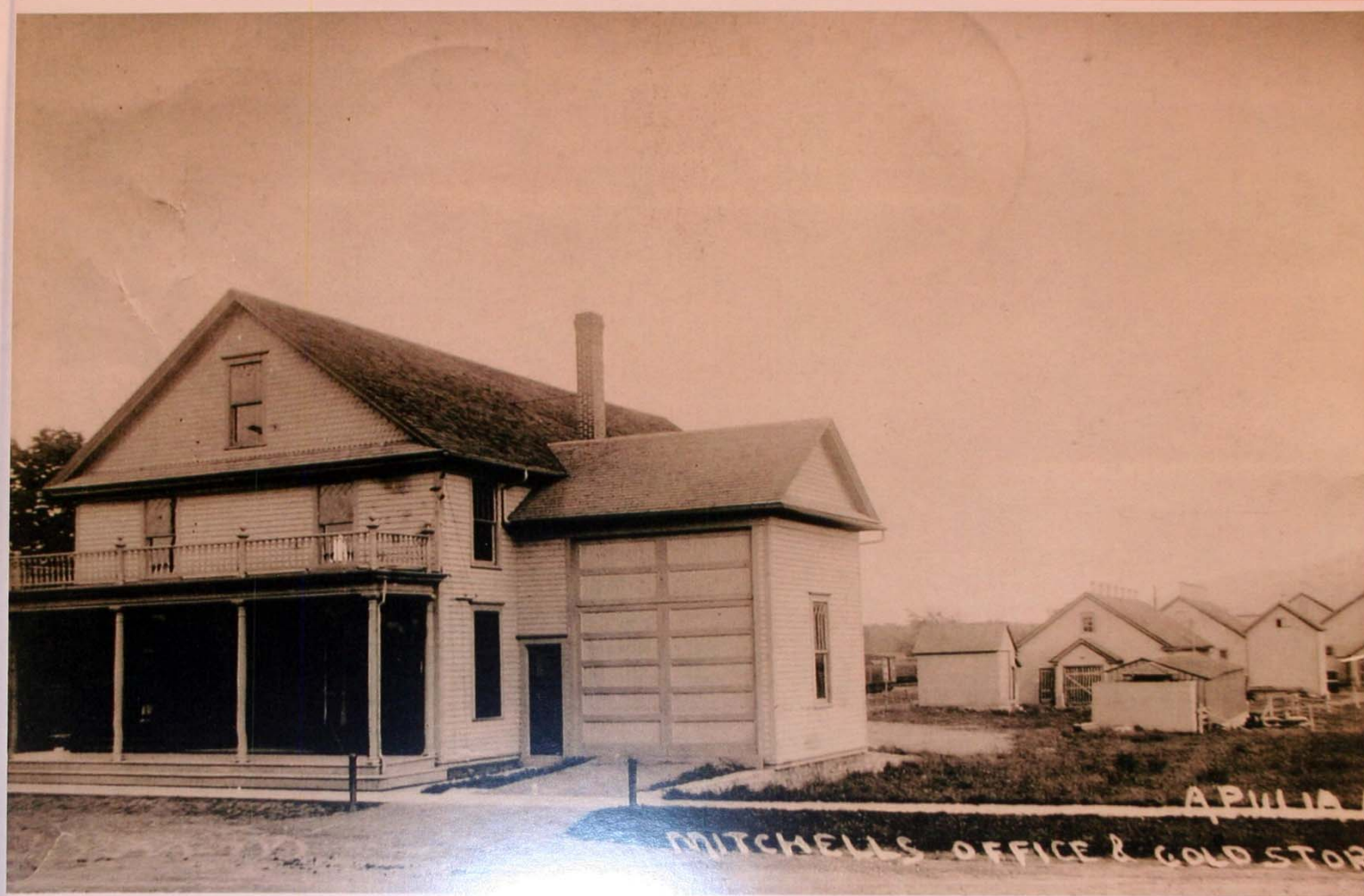
L. E. BEERS GROCERY STORE
W. MAIN STREET, APULIA STATION



APULIA STATION SAW MILL



FARMERS SYNDICATE (STORE AND "FLOUR + SEED" ON SIGN)



MITCHELL'S OFFICE AND COLD STORAGE

A. M. MITCHELL,

.....Wholesale Dealer in....

PRODUCE

APULIA STATION, N. Y.

=====

Specialties,
Cabbage, Potatoes.

=====

Presented to.....

Ryan + Young

Nov 1

1901



BORDEN'S MILK STATION

THIS FACILITY WAS OPERATED BY VARIOUS OWNERS PRIOR TO ITS PURCHASE BY BORDEN'S FARM PRODUCTS COMPANY. THE FIRST RECORD USE OF A GLASS-LINED TANK CAR FOR MILK IN NYS WAS ON JULY 7, 1926, FROM THIS PLANT, AND FOR SOME TIME, MORE TONNAGE OF DAIRY PRODUCT WAS SHIPPED FROM APULIA STATION THAN FROM ANY OTHER ON THE RAILROAD LINE.



JANUARY, 1941, DEXTER PADDOCK PURCHASED MRS. McCONNELL'S MEAT MARKET IN APULIA STATION.



DEXTOR PADDOK
WITH 2 OF HIS CHILDREN IN FRONT
OF PADDOK'S MEAT MARKET

Choice Meats Quality Groceries
Fruits and Vegetables
PADDOK'S MARKET
Apulia Station, N. Y.
Hours 7:30 a. m. to 6 p. m.
Wednesday and Saturday 7:30 a. m. to 9 p. m.
Phones: Tully 2485 Fabius 2641

Special:---Plate Beef 19c Lb. This Week.
Choice Meats Quality Groceries
Fruits and Vegetables
PADDOK'S MARKET
Apulia Station, N. Y.
Phones: Tully 2485 Fabius 2641

PRESENT DAY STORES AND BUSINESSES

CLN MERCANTILE (formerly Anna's Country Store)

HOST BLACKSMITHING

GANDEE GALLERY

-- specializes in homemade objects and fine art

FABIUS INDOOR SPORTS TRAINING CENTER

TOGGENBURG SKI CENTER

APULIA AG + AUTOMOTIVE

--run by Doug Wheeler

WOODFORD BROS.

--structural repairs

--coal

MEMORIES

GRANT "SONNY" GOODRICH:

MIKE SHEA'S STORE

--saw a pony harness hanging on the wall in the attic

SONNY HAD EMMA JACOB CUT HIS HAIR.

--He paid 25 cents. After the haircut, Emma gave him a nickel back.

Then Sonny went next door to Rudd's Store and spent the nickel on candy.

SONNY'S DAD WENT TO TULLY TO SHOP.

SONNY WENT TO SEARS ROEBUCK FOR CLOTHING AND FOOTWEAR.

MEMORIES

RUSSELL PILCHER:

RANCE CORNUE'S BARBER SHOP
EMMA JACOB'S BEAUTY + BARBER SHOP
AL CHASE'S BARBER SHOP
AGATHA FULLER'S BEAUTY SHOP

SHEA'S GROCERY STORE + GASOLINE
IGA GROCERY STORE
RUDD'S STORE

BISHOP'S ICE

FONDA HOUCK'S FLOWER SHOP

FABIUS GRILL

DR. KINSLOW (optician)

RYAN'S CONFECTIONARY SHOP

FABIUS BOWLING ALLEY

BUSINESSES OUT OF HOMES:

Conway (plumber)
piano teachers

MEMORIES

WINNIE HATHAWAY TERRILL:

MIKE SHEA'S

- glass containers of candy
- clothes, socks

HAMILTON'S

- post office boxes in back of the store
- food

RUDD'S STORE

- food
- good meat

HARDWARE STORE ACROSS FROM SHEA'S STORE

- Winnie got her marriage license there

MEMORIES

CLARA BRYAN OWENS NEWSON (96 years old)
(born in the Township of Pompey, just north of the Fabius line)

RUDD'S STORE (corner of Rts. 91 + 80), (now an apartment building)

DEMONG'S STORE (across the street from Rudd's Store)

SNACK BAR (across from the elementary school)
--owned by Lyman Rogers
--had candy, baked goods, bread

SHEA'S STORE
--Mike Shea was running it.
--Winnie remembers pickles in barrels, a large block of cheese not refrigerated.

BENEDICT'S GENERAL STORE

HAMILTON'S STORE
--Carl Hamilton had dry goods and hardware.

PEARL WEBB
--Pearl had a sanitarium in her house where babies were born.

MEAT MARKET
--Clara's mom met her future husband (George Bryan) there.